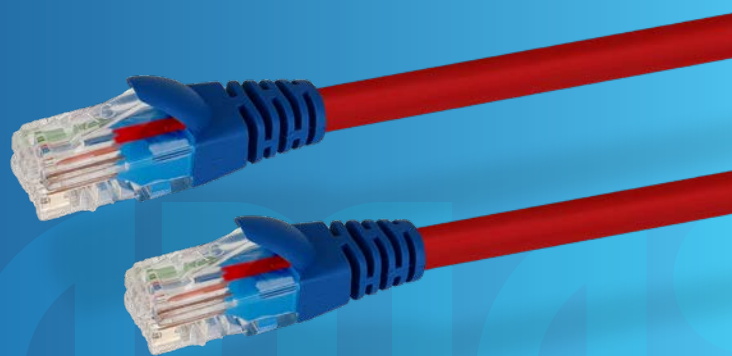


## Cat6 UTP Crossover Patch Cable

W2780RED, W2781RED, W2782RED, W2783RED,  
W2785RED, W2790RED, W2791RED, W2792RED

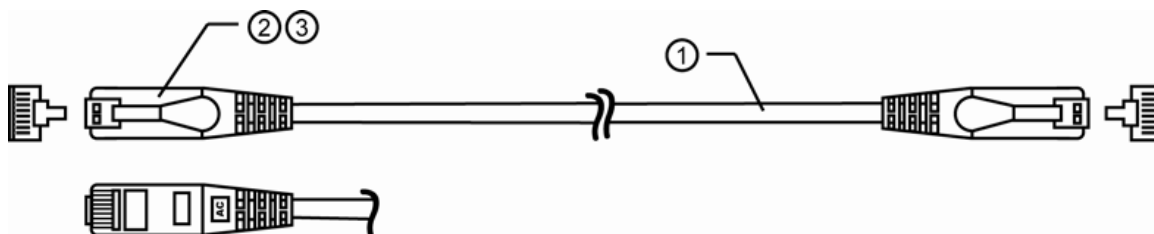


# DATAMASTER

### FEATURES

- All Datamaster® Network Patch Cables are Fluke® tested and are manufactured to exceed Australian standards.
- ISO/IEC 11801 Category 6. TIA/EIA-568-C.2 Category 6 compliant
- Cat6 standard provides performance up to 250MHz and is suitable for Fast Ethernet and Gigabit Ethernet plus other network protocols that are backward compatible with Cat5/5e and Cat3 standards
- Wiring is cross-over T568A to T568B
- Used to daisy-chain switches/hubs
- Used for direct connection of two computer networks
- Red cord jacket with blue boots, to minimise the chance of confusion with straight-through cable
- Made from 100% oxygen-free copper
- Unshielded twisted pair (UTP)
- 4 twisted pairs (8 multi-strand connectors)
- RJ45-RJ45 connectors; high quality injection moulded for outstanding strain relief
- 50µm gold Category 6 compliant 2-row (staggered pin) plug
- Snagless Boots
- Supplied in Datamaster® hang-cell bags
- 5-Year limited warranty
- Custom-made cables are our specialty from custom lengths & colours to customer branded printing, contact us to discuss your needs.

### DESIGN & CONSTRUCTION



ITEM	DESCRIPTION	SPECIFICATION
1	Cable	UTP Cat-6; Stranded conductors; 24AWG
2	Jacket	50P PVC
3	Connectors	8P8C; 50µ" Gold plated, Moulded boot

To view Access' extensive ranges go to: [www.accesscomms.com.au](http://www.accesscomms.com.au)

Sydney (Head Office)  
Brisbane Sales  
Melbourne Office  
Adelaide Office

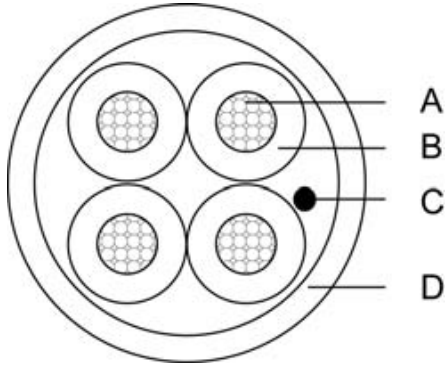
Unit 1, 29 Prince William Drive, Seven Hills NSW 2147  
28 The Gateway, Broadmeadows VIC 3047  
71 Anzac Highway, Ashford SA 5035

Phone: (02) 9414 8888  
Phone: (07) 3308 5555  
Phone: (03) 9330 8333  
Phone: (08) 8338 5540

sales@accesscomms.com.au  
brisbane@accesscomms.com.au  
melbourne@accesscomms.com.au  
adelaide@accesscomms.com.au

## Cat6 UTP Crossover Patch Cable

W2780RED, W2781RED, W2782RED, W2783RED,  
W2785RED, W2790RED, W2791RED, W2792RED



	DESCRIPTION	COLOUR	SPECIFICATION	MATERIALS
A	Conductor		4 x 65 / 0.16 (±0.008)mm (16AWG)	Stranded Bare Copper
B	Conductor Insulation (B)	Green / Red / White / Black	4 x 2.30 (± 0.15) mm	FR-PVC
C	Rip Cord			Nylon
D	Sheath	Yellow	6.40 (± 0.25)mm	FR-PVC

ELECTRICAL CHARACTERISTICS	
Maximum Conductor DC Resistance	< 1.58 Ω 1000 Metres @ 20 °C
Minimum Insulation DC Resistance	> 200M Ω / Metre @ 20 °C
Rated Temperature	80 °C
Rated Voltage	300 V

PHYSICAL CHARACTERISTICS	
Minimum Bending Radius	15 x Dmm
Conductor Elongation	> 15 % (at breaking point)
Sheath Tensile Strength	10.00N / mm <sup>2</sup>
Sheath Elongation at Break	125.0% (at breaking point)

PINOUT		
J1	J2	COLOUR
1	3	Green/White
2	6	Green
3	1	Orange/White
4	4	Blue
5	5	Blue/White
6	2	Orange
7	7	Brown/White
8	8	Brown

LENGTHS	
CODE	LENGTH
W2780RED	0.5 Metre
W2781RED	1 Metre
W2782RED	2 Metre
W2783RED	3 Metre
W2785RED	5 Metre
W2790RED	10 Metre
W2791RED	15 Metre
W2792RED	20 Metre

To view Access' extensive ranges go to: [www.accesscomms.com.au](http://www.accesscomms.com.au)

Sydney (Head Office)  
Brisbane Sales  
Melbourne Office  
Adelaide Office

Unit 1, 29 Prince William Drive, Seven Hills NSW 2147  
28 The Gateway, Broadmeadows VIC 3047  
71 Anzac Highway, Ashford SA 5035

Phone: (02) 9414 8888  
Phone: (07) 3308 5555  
Phone: (03) 9330 8333  
Phone: (08) 8338 5540

sales@accesscomms.com.au  
brisbane@accesscomms.com.au  
melbourne@accesscomms.com.au  
adelaide@accesscomms.com.au

## Cat6 UTP Crossover Patch Cable

W2780RED, W2781RED, W2782RED, W2783RED,  
W2785RED, W2790RED, W2791RED, W2792RED

### ELECTRICAL PROPERTIES

Max. Conductor DC Resistance at 20°C ( $\Omega/100M$ ) < 9.14

Min. Insulation DC Resistance at 20°C ( $M\Omega \cdot M$ ) > 200

Rated Temperature (°C) 80

Rated Voltage 30

### PACKING

Y3461YEL 100 Metre Reel

Y3462YEL 200 Metre Reel

### REGULATORY COMPLIANCE



To view Access' extensive ranges go to: [www.accesscomms.com.au](http://www.accesscomms.com.au)

**Sydney (Head Office)**  
**Brisbane Sales**  
**Melbourne Office**  
**Adelaide Office**

Unit 1, 29 Prince William Drive, Seven Hills NSW 2147

28 The Gateway, Broadmeadows VIC 3047  
71 Anzac Highway, Ashford SA 5035

Phone: (02) 9414 8888  
Phone: (07) 3308 5555  
Phone: (03) 9330 8333  
Phone: (08) 8338 5540

[sales@accesscomms.com.au](mailto:sales@accesscomms.com.au)  
[brisbane@accesscomms.com.au](mailto:brisbane@accesscomms.com.au)  
[melbourne@accesscomms.com.au](mailto:melbourne@accesscomms.com.au)  
[adelaide@accesscomms.com.au](mailto:adelaide@accesscomms.com.au)