

Plug-In Power Supply Unit 48C 24V AC 1000mA Black 2 Con 11-55-21

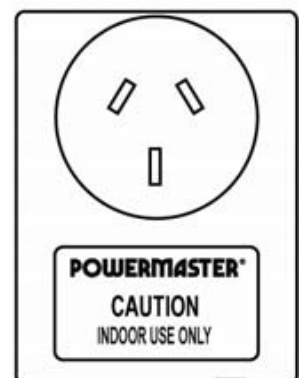
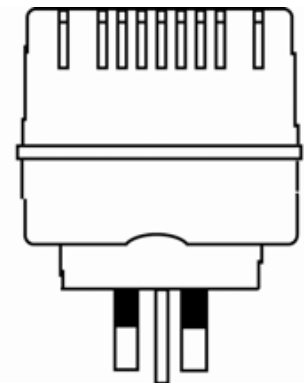
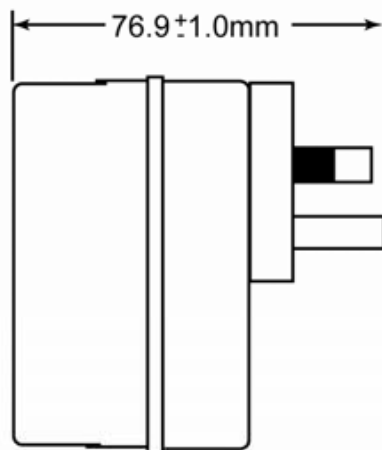
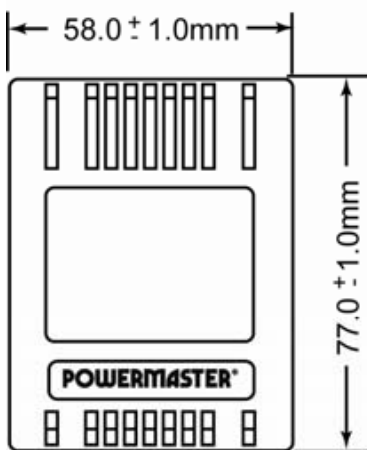
T2410A21



FEATURES

- 48C Series AC Adaptor (Alarm Panel PSU), Large ventilated case with 24 Watt maximum capacity designed for applications such as security systems.
- Specialised 16V AC 1.5 Amp Class 1 (earthed) version available with ash coloured case for security system manufacturers and installers.
- A selection of models is stocked. Custom models can be made from 3V to 30V with 300mA to 4 Amp current range. Insulated active and neutral pins meet AS/NZS3112 for improved electrical safety.
- Dimensions 58(W) × 77(H) × 57(D) mm.
- Electrical Safety Authority Approved.

DESIGN & CONSTRUCTION



To view Access' extensive ranges go to: www.accesscomms.com.au

Sydney (Head Office)
Brisbane Sales
Melbourne Office
Adelaide Office

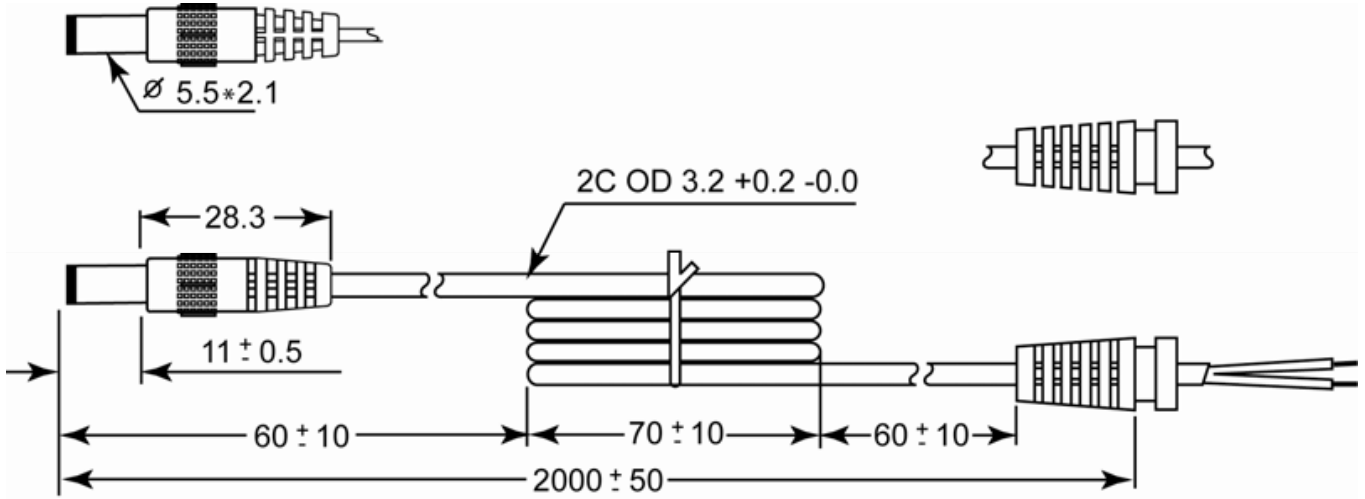
Unit 1, 29 Prince William Drive, Seven Hills NSW 2147
28 The Gateway, Broadmeadows VIC 3047
71 Anzac Highway, Ashford SA 5035

Phone: (02) 9414 8888
Phone: (07) 3308 5555
Phone: (03) 9330 8333
Phone: (08) 8338 5540

sales@accesscomms.com.au
brisbane@accesscomms.com.au
melbourne@accesscomms.com.au
adelaide@accesscomms.com.au

Plug-In Power Supply Unit 48C 24V AC 1000mA Black 2 Con 11-55-21

T2410A21



AUSTRALIAN COMPLIANCE

ELECTRICAL SAFETY

CERTIFICATE NSW17582

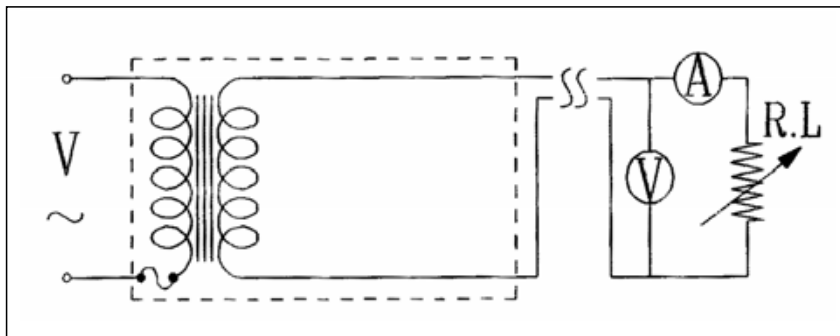
EMC



ENERGY EFFICIENCY (MEPS MARK)



CIRCUIT DIAGRAM



To view Access' extensive ranges go to: www.accesscomms.com.au

Sydney (Head Office)
Brisbane Sales
Melbourne Office
Adelaide Office

Unit 1, 29 Prince William Drive, Seven Hills NSW 2147
28 The Gateway, Broadmeadows VIC 3047
71 Anzac Highway, Ashford SA 5035

Phone: (02) 9414 8888
Phone: (07) 3308 5555
Phone: (03) 9330 8333
Phone: (08) 8338 5540

sales@accesscomms.com.au
brisbane@accesscomms.com.au
melbourne@accesscomms.com.au
adelaide@accesscomms.com.au

Plug-In Power Supply Unit 48C 24V AC 1000mA Black 2 Con 11-55-21 T2410A21

ELECTRICAL CHARACTERISTICS

Load Current	Input	Input Exiting Current
0mA	240V AC 50Hz	95mA MAX
1000mA	240V AC 50Hz	170mA MAX

Input Voltage	Load Current	Output Voltage
240 V AC 50Hz	0ma	28.0V AC \pm 8%
	1000mA	24.0V AC \pm 8%

Operating Temperature	-10°C ~ +40°C (10 ~ 90% RH)
Storage Temperature	-20°C ~ +70°C (10 ~ 90% RH)
Insulation Resistance	100M Ω Minimum between primary and secondary and core of transformer @ 500VDC
Efficiency	78.6% Minimum
Hi-Pot Test There shall be no breakdown applying 3600VAC for 2 seconds Secondary circuit is connected to the transformer	There shall be no electrical damage after applying 3000V AC 50/60Hz between Primary and Secondary, Primary and Core and Primary and Case for 1 minute (detecting current set to 2ma).
Temperature Rise Measured by Resistance Method	With input of 240V AC 50Hz and output load of 1000mA, the temperature rise shall nor exceed 45°C on the case surface and 75°C for the input coil.
Vibration Test	Vibrating frequency 10-55-10Hz. Direction X-Y-Z. Sweep time 30 minutes. No abnormal electrical or mechanical condition shall be found.
Audible Noise	With rated voltage input \pm 10%, approximate sinewave I/P applied to the primary and with the secondary loaded, no audible noise shall be present at a distance of 1 metre from the transformer.

To view Access' extensive ranges go to: www.accesscomms.com.au

Sydney (Head Office)
Brisbane Sales
Melbourne Office
Adelaide Office

Unit 1, 29 Prince William Drive, Seven Hills NSW 2147
28 The Gateway, Broadmeadows VIC 3047
71 Anzac Highway, Ashford SA 5035

Phone: (02) 9414 8888
Phone: (07) 3308 5555
Phone: (03) 9330 8333
Phone: (08) 8338 5540

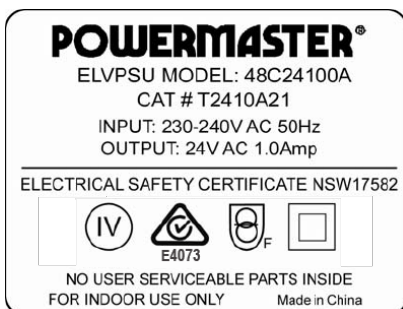
sales@accesscomms.com.au
brisbane@accesscomms.com.au
melbourne@accesscomms.com.au
adelaide@accesscomms.com.au

Plug-In Power Supply Unit 48C 24V AC 1000mA Black 2 Con 11-55-21 T2410A21

MECHANICAL CHARACTERISTICS

Configuration	Wall-Mount (Integral mains pins)	
Mains Pins	AS / NZS3112:2004 (SAA) 3 pins, insulated active & neutral	
Dimensions	78 (L) x 59 (W) x 78.0 (H) mm maximum	
Weight	620g maximum	
Cooling	Natural Convection	
Thermal Fuse	130°C 2A 250V	
Terminal Strength	AC Side	DC Side
	10 kgs for 60 seconds	5 kg for 60 seconds
	No breakage shall occur after the completion of the test	
Drop Test	No abnormal condition should be found after a free-fall from a height of 75cm onto a 1cm thick (minimum) wood surface. After a total of 6 drop tests (one on each plane) the adaptor shall pass the insulation resistance test (100MΩ minimum)	
Cord Bending Test	The cord shall withstand a total of 1000 40 cycle/minute swings from left to right at an angle of 120 degrees with a 300g weight attached.	
Strain Relief Test	The cord shall withstand a weight of 9.1kgs attached to the cord end for one minute minimum. There shall be no visible or electrical damage.	

RATING PLATE



To view Access' extensive ranges go to: www.accesscomms.com.au

Sydney (Head Office)
Brisbane Sales
Melbourne Office
Adelaide Office

Unit 1, 29 Prince William Drive, Seven Hills NSW 2147
28 The Gateway, Broadmeadows VIC 3047
71 Anzac Highway, Ashford SA 5035

Phone: (02) 9414 8888
Phone: (07) 3308 5555
Phone: (03) 9330 8333
Phone: (08) 8338 5540

sales@accesscomms.com.au
brisbane@accesscomms.com.au
melbourne@accesscomms.com.au
adelaide@accesscomms.com.au