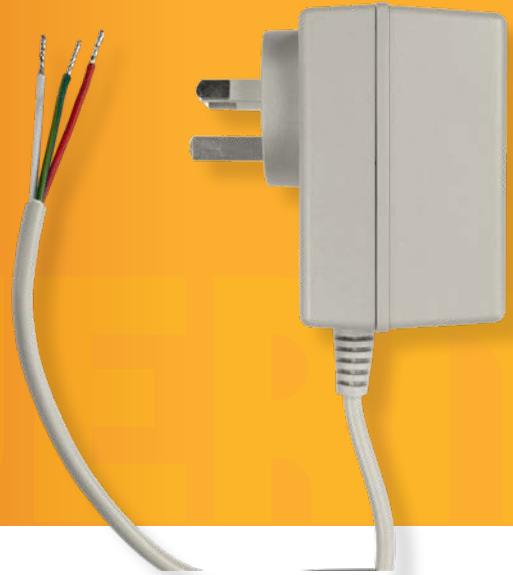


## 48C Series AC Adaptor Alarm Panel PSU

T1813S/T

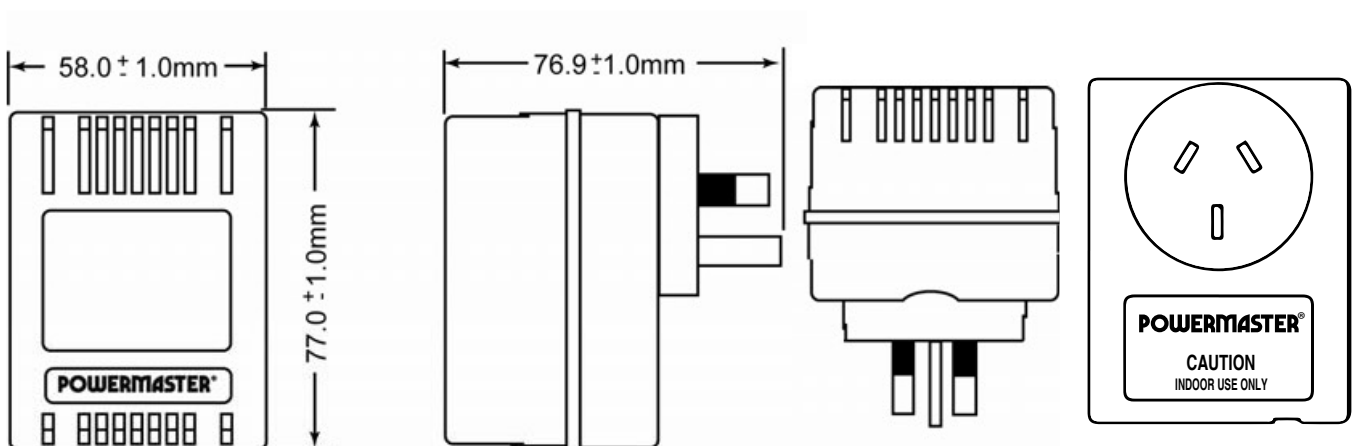


### FEATURES

- Large ventilated case with 24 watt maximum capacity designed for applications such as security systems.
- Specialised 18V AC 1.33 Amp Class 1 (earthed) version available with ash coloured case for security system manufacturers and installers.
- A selection of models are stocked which custom models can be made from 3V to 30V with 300mA to 4 Amp current range.
- Insulated active and neutral pins meet AS/NZS3112 for improved electrical safety.
- Dimensions 58(W) × 77(H) × 57(D) mm.
- Electrical Safety Authority Approved.

CAT#	OUTPUT	OUTPUT PLUG
T1813S/T	18V AC 1.33 Amp	Stripped/Tinned

### DESIGN & CONSTRUCTION



To view Access' extensive ranges go to: [www.accesscomms.com.au](http://www.accesscomms.com.au)

Sydney (Head Office)  
Brisbane Sales  
Melbourne Office  
Adelaide Office

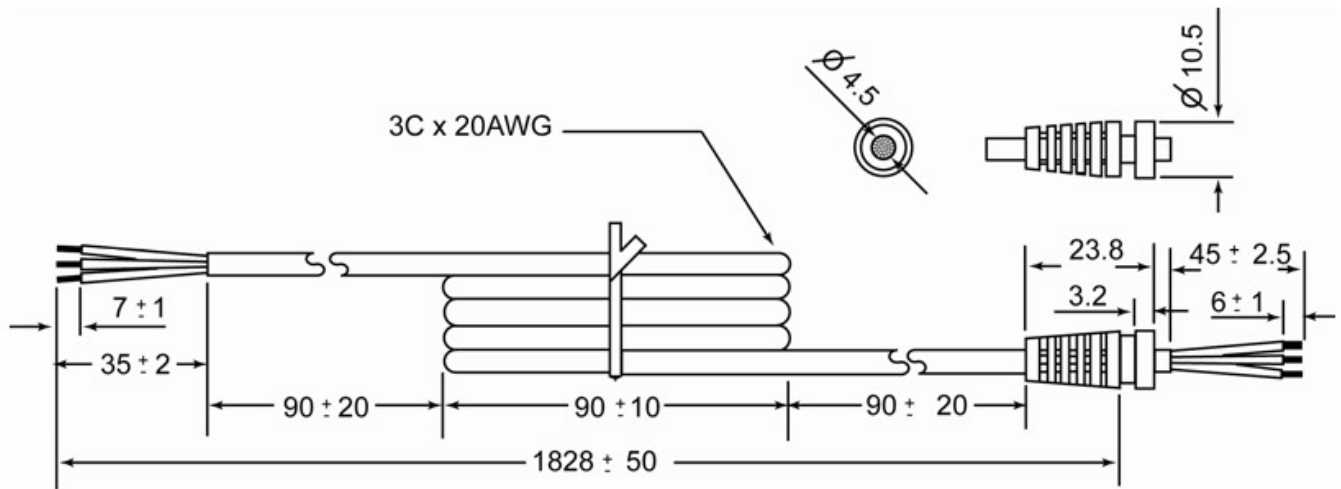
Unit 1, 29 Prince William Drive, Seven Hills NSW 2147  
28 The Gateway, Broadmeadows VIC 3047  
71 Anzac Highway, Ashford SA 5035

Phone: (02) 9414 8888  
Phone: (07) 3308 5555  
Phone: (03) 9330 8333  
Phone: (08) 8338 5540

sales@accesscomms.com.au  
brisbane@accesscomms.com.au  
melbourne@accesscomms.com.au  
adelaide@accesscomms.com.au

## 48C Series AC Adaptor Alarm Panel PSU

T1813S/T



### ELECTRICAL CHARACTERISTICS

LOAD CURRENT	INPUT	INPUT EXITING CURRENT
0mA	240V AC 50Hz	85mA Max.
1500mA	240V AC 50Hz	165mA Max.

INPUT VOLTAGE	LOAD CURRENT	OUTPUT VOLTAGE
240 V AC 50Hz	0mA	18.8V AC $\pm 5\%$
240 V AC 50Hz	1500mA	16.0V AC $\pm 5\%$

To view Access' extensive ranges go to: [www.accesscomms.com.au](http://www.accesscomms.com.au)

**Sydney (Head Office)**  
**Brisbane Sales**  
**Melbourne Office**  
**Adelaide Office**

Unit 1, 29 Prince William Drive, Seven Hills NSW 2147  
 28 The Gateway, Broadmeadows VIC 3047  
 71 Anzac Highway, Ashford SA 5035

Phone: (02) 9414 8888  
 Phone: (07) 3308 5555  
 Phone: (03) 9330 8333  
 Phone: (08) 8338 5540

[sales@accesscomms.com.au](mailto:sales@accesscomms.com.au)  
[brisbane@accesscomms.com.au](mailto:brisbane@accesscomms.com.au)  
[melbourne@accesscomms.com.au](mailto:melbourne@accesscomms.com.au)  
[adelaide@accesscomms.com.au](mailto:adelaide@accesscomms.com.au)

## 48C Series AC Adaptor Alarm Panel PSU

T1813S/T

### ENVIRONMENTAL

<b>Operating Temperature</b>	-10°C ~ +40°C (10 ~ 90% RH)
<b>Storage Temperature</b>	-20°C ~ +70°C (10 ~ 90% RH)
<b>Exiting Current</b>	165mA maximum with input of 240VAC 50Hz
<b>Insulation Resistance</b>	1100MΩ Minimum between primary and secondary and core of transformer @ 500VDC
<b>Efficiency</b>	78.6% Minimum
<b>Hi-Pot Test</b> There shall be no breakdown applying 3600VAC for 2 seconds Secondary circuit is connected to the transformer	There shall be no electrical damage after applying 3000V AC 50/60Hz between Primary and Secondary, Primary and Core and Primary and Case for 1 minute (detecting current set to 2ma).
<b>Temperature Rise</b> Measured by resistance method	With input of 240V AC 50Hz and output load of 1500mA, the temperature rise shall not exceed 45°C on the case surface and 75°C for the input coil.
<b>Vibration Test</b>	Vibrating frequency 10-55-10Hz. Direction X-Y-Z. Sweep time 30 minutes. No abnormal electrical or mechanical condition shall be found.
<b>Audible Noise</b>	With rated voltage input $\pm 10\%$ , approximate sinewave I/P applied to the primary and with the secondary loaded, no audible noise shall be present at a distance of 1 metre from the transformer.

To view Access' extensive ranges go to: [www.accesscomms.com.au](http://www.accesscomms.com.au)

**Sydney (Head Office)**  
**Brisbane Sales**  
**Melbourne Office**  
**Adelaide Office**

Unit 1, 29 Prince William Drive, Seven Hills NSW 2147  
28 The Gateway, Broadmeadows VIC 3047  
71 Anzac Highway, Ashford SA 5035

Phone: (02) 9414 8888  
Phone: (07) 3308 5555  
Phone: (03) 9330 8333  
Phone: (08) 8338 5540

[sales@accesscomms.com.au](mailto:sales@accesscomms.com.au)  
[brisbane@accesscomms.com.au](mailto:brisbane@accesscomms.com.au)  
[melbourne@accesscomms.com.au](mailto:melbourne@accesscomms.com.au)  
[adelaide@accesscomms.com.au](mailto:adelaide@accesscomms.com.au)

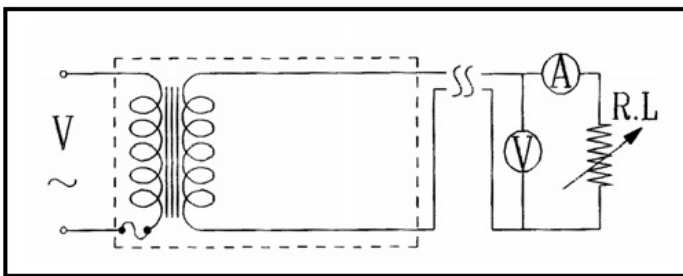
## 48C Series AC Adaptor Alarm Panel PSU

T1813S/T

### AUSTRALIAN COMPLIANCE

<b>Electrical Safety</b>	Certificate NSW17582		
<b>EMC</b>			
<b>Energy Efficiency (MEPS Mark)</b>			

### CIRCUIT DIAGRAM



### MECHANICAL CHARACTERISTICS

<b>Configuration</b>	Wall-mount, (integral mains pins)	
<b>Mains Pins</b>	AS/NZS3112:2004 (SAA) 3 pins, insulated active & neutral	
<b>Dimensions</b>	77.9(L) x 59(W) x 78.0(H)mm maximum	
<b>Weight</b>	620g maximum	
<b>Cooling</b>	Natural Convection	
<b>Thermal Fuse</b>	130°C 2A 250V	
	<b>AC SIDE</b>	<b>DC SIDE</b>
<b>Terminal Strength</b>	10 Kg for 60 Seconds	5 Kg for 60 Seconds
	No breakage shall occur after the completion of the test.	
<b>Drop Test</b>	No abnormal condition should be found after a free-fall from a height of 75cm onto a 1cm thick (minimum) wood surface. After a total of 6 drop tests (one on each plane) the adaptor shall pass the insulation resistance test (100MΩ minimum).	
<b>Cord Bending Test</b>	The cord shall withstand a total of 1000 40 cycle/minute swings from left to right at an angle of 120 degrees with a 300g weight attached.	
<b>Strain Relief Test</b>	The cord shall withstand a weight of 9.1Kg attached to the cord end for one minute minimum. There shall be no visible or electrical damage.	

To view Access' extensive ranges go to: [www.accesscomms.com.au](http://www.accesscomms.com.au)

Sydney (Head Office)  
Brisbane Sales  
Melbourne Office  
Adelaide Office

Unit 1, 29 Prince William Drive, Seven Hills NSW 2147  
28 The Gateway, Broadmeadows VIC 3047  
71 Anzac Highway, Ashford SA 5035

Phone: (02) 9414 8888  
Phone: (07) 3308 5555  
Phone: (03) 9330 8333  
Phone: (08) 8338 5540

sales@accesscomms.com.au  
brisbane@accesscomms.com.au  
melbourne@accesscomms.com.au  
adelaide@accesscomms.com.au