

## Wall bracket series

P4210

# DATAMASTER

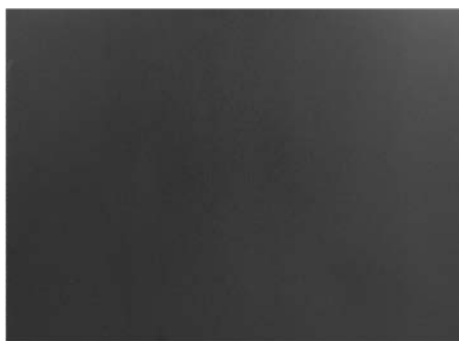
### FEATURES

#### Wall Bracket Lid

Lid to suit our 2RU and 4RU 19" patch-panel wall-brackets.

- Ideal shelf for switch, router or modem and provides protection for rear wiring
- Finished in black semi-gloss enamel paint
- 150mm deep x 1.5mm thick

SKU	COLOUR	TYPE
P4210	Black	Lid
P4212	Black	2RU
P4214	Black	4RU



To view Access' extensive ranges go to: [www.accesscomms.com.au](http://www.accesscomms.com.au)

**Sydney (Head Office)**  
**Brisbane Sales**  
**Melbourne Office**  
**Adelaide Office**

Unit 1, 29 Prince William Drive, Seven Hills NSW 2147

28 The Gateway, Broadmeadows VIC 3047  
71 Anzac Highway, Ashford SA 5035

Phone: (02) 9414 8888  
Phone: (07) 3308 5555  
Phone: (03) 9330 8333  
Phone: (08) 8338 5540

[sales@accesscomms.com.au](mailto:sales@accesscomms.com.au)  
[brisbane@accesscomms.com.au](mailto:brisbane@accesscomms.com.au)  
[melbourne@accesscomms.com.au](mailto:melbourne@accesscomms.com.au)  
[adelaide@accesscomms.com.au](mailto:adelaide@accesscomms.com.au)

## Wall bracket series

P4212



### FEATURES

Wall mount bracket for installation of patch panels or other 19" rack mounted equipment.

- Hinged for easy access to wiring
- Panel bolts included
- All units are 150mm deep
- 2RU and 4RU versions available

SKU	COLOUR	TYPE
P4210	Black	Lid
P4212	Black	2RU
P4214	Black	4RU



To view Access' extensive ranges go to: [www.accesscomms.com.au](http://www.accesscomms.com.au)

**Sydney (Head Office)**  
**Brisbane Sales**  
**Melbourne Office**  
**Adelaide Office**

Unit 1, 29 Prince William Drive, Seven Hills NSW 2147  
28 The Gateway, Broadmeadows VIC 3047  
71 Anzac Highway, Ashford SA 5035

Phone: (02) 9414 8888  
Phone: (07) 3308 5555  
Phone: (03) 9330 8333  
Phone: (08) 8338 5540

[sales@accesscomms.com.au](mailto:sales@accesscomms.com.au)  
[brisbane@accesscomms.com.au](mailto:brisbane@accesscomms.com.au)  
[melbourne@accesscomms.com.au](mailto:melbourne@accesscomms.com.au)  
[adelaide@accesscomms.com.au](mailto:adelaide@accesscomms.com.au)

## Wall bracket series

P4214



### FEATURES

Wall mount bracket for installation of patch panels or other 19" rack mounted equipment.

- Hinged for easy access to wiring
- Panel bolts included
- All units are 150mm deep
- 2RU and 4RU versions available

SKU	COLOUR	TYPE
P4210	Black	Lid
P4212	Black	2RU
P4214	Black	4RU



To view Access' extensive ranges go to: [www.accesscomms.com.au](http://www.accesscomms.com.au)

Sydney (Head Office)  
Brisbane Sales  
Melbourne Office  
Adelaide Office

Unit 1, 29 Prince William Drive, Seven Hills NSW 2147  
28 The Gateway, Broadmeadows VIC 3047  
71 Anzac Highway, Ashford SA 5035

Phone: (02) 9414 8888  
Phone: (07) 3308 5555  
Phone: (03) 9330 8333  
Phone: (08) 8338 5540

[sales@accesscomms.com.au](mailto:sales@accesscomms.com.au)  
[brisbane@accesscomms.com.au](mailto:brisbane@accesscomms.com.au)  
[melbourne@accesscomms.com.au](mailto:melbourne@accesscomms.com.au)  
[adelaide@accesscomms.com.au](mailto:adelaide@accesscomms.com.au)