

Cat6 48 Port 1 RU High Density Patch Panel ; P4051



DESCRIPTION

48 Port 1 RU High density Cat6 Patch Panel comes with cable managements and easily removable 5 port modules to allow “no fuss” rapid termination while preserving the high density profile. This panel uses PCB technology to balance signal transmission and to provide low insertion loss, return loss and cross talk. The IDC Terminal block can be used with both Krone and 110 impacts tools and has combined T568A & T568B colour coding for easy installation. This panel provides the perfect partner to our DATAMASTER SLIM and FLAT patch cords when planning your next high density installation.

- Suits all Cat6 Patch Leads, including Datamaster SLIM & FLAT
- 48-port Cat6 RJ45 port
- The transmission characteristics of Datamaster’ patch panels meet the requirements of Cat6 ISO1180, S008 ROHS AND UL specifications.
- Using PCB technology to balance signal transmission and provide low insertion loss, return loss and crosstalk
- The IDC terminal block can be used with both Krone and 110 impact tools and has combined T568A & T568B colour coding for easy installation.
- Design incorporates nylon loops for cable management.
- Available in 1RU & 2RU sizes.
- Available in 12-port, 24-port, 48-port capacity.
- An optional cable support bar is available to suit our 24-port panels item #P4226.

FEATURES

IDC	The IDC colour combine two wirings of T568A & T568B
Insertion Force	900 grms for 8 contacts
Retention Strength	7.7 kgs between Jack and Plug
Operation Temperature	- 40 ° C to 70 ° C
Durability	e-1. Jack: 750 cycles/minute max. Contact resistance test per 100 cycles e-2. IDC : Max 200 Punching Times
Compliance	The Cat.6 performance is in compliance with the ANSI/TIA/EIA 586 B.2 Standard

To view Access’ extensive ranges go to: www.accesscomms.com.au

Sydney (Head Office) 33-35 Alleyne Street, Chatswood, NSW, 2067
Brisbane Office
Melbourne Office 28 The Gateway, Broadmeadows, VIC, 3047
Adelaide Office 71 Znac Highway, Ashford, SA, 5035

Phone: (02) 9414 8888
 Phone: (07) 3308 5555
 Phone: (03) 9330 8333
 Phone: (08) 8338 5540

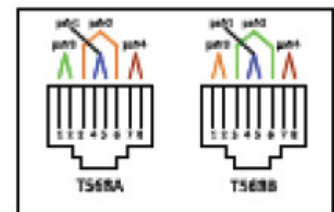
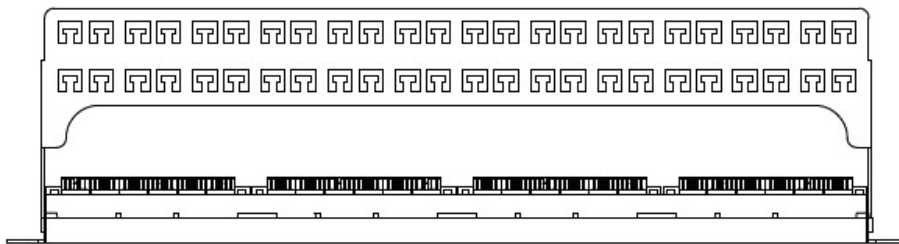
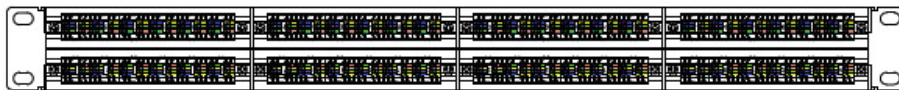
Fax: (02) 9414 8800
 Fax: (07) 3308 5500
 Fax: (03) 9330 8330
 Mob: 0438 245 116

websales@accesscomms.com.au
brisbane@accesscomms.com.au
melbourne@accesscomms.com.au
adelaide@accesscomms.com.au

Cat6 48 Port 1 RU High Density Patch Panel ; P4051



CONSTRUCTION DRAWING



MATERIALS

Panel	1.5 mm / SPCC with Black Colour Painting
RJ45 Housing	PBT UL 94V-0
RJ45 Contact Material	3 - 1 Phosphor Bronze with 50-60 micro-Inch Nickel Plated 3 - 2 Contact Area: 3-50micro-Inch Gold Plated
IDC House	PC, UL 94V-2
IDC Terminal Material & Finished	5-1 Phosphor Bronze with 50 micro-inch Tin-Lead plated. 5-2 Use for 22-26 AWG Stranded and Solid Wire Over 50-60 micro-inch Nickel Plated
PCB	FR4, UL 94V-0

To view Access' extensive ranges go to: www.accesscomms.com.au

Sydney (Head Office) 33-35 Alleyne Street, Chatswood, NSW, 2067
Brisbane Office
Melbourne Office 28 The Gateway, Broadmeadows, VIC, 3047
Adelaide Office 71 Znac Highway, Ashford, SA, 5035

Phone: (02) 9414 8888
 Phone: (07) 3308 5555
 Phone: (03) 9330 8333
 Phone: (08) 8338 5540

Fax: (02) 9414 8800
 Fax: (07) 3308 5500
 Fax: (03) 9330 8330
 Mob: 0438 245 116

websales@accesscomms.com.au
brisbane@accesscomms.com.au
melbourne@accesscomms.com.au
adelaide@accesscomms.com.au