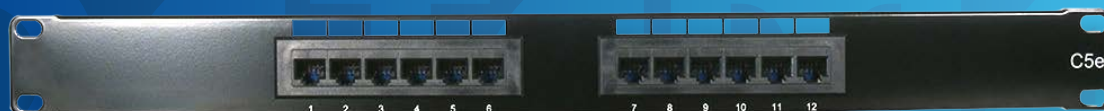


## Cat5e 12 Port Patch Panel

P4013



### FEATURES

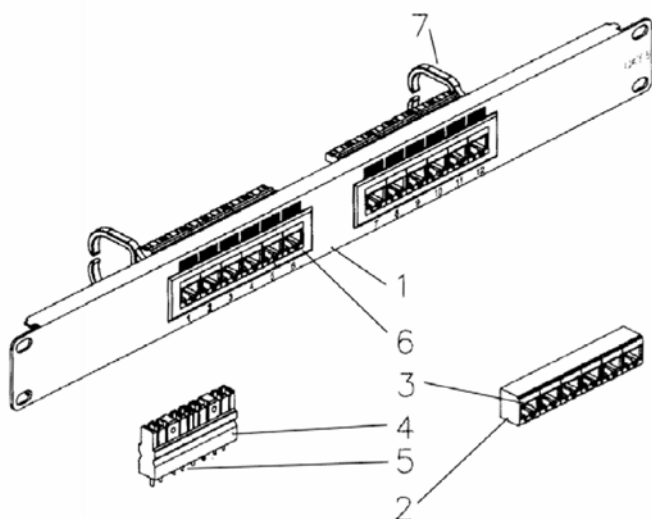
Datamaster Cat5e 1RU Patch Panel with integrated rear Cable Management loops.

- 1RU 12-port Cat5e RJ45 ports
- The transmission characteristics of Datamaster' patch panels meet the requirements of Cat5e specifications.
- Using PCB technology to balance signal transmission and provide low insertion loss, return loss and crosstalk.
- The IDC terminal block can be used with both Krone and 110 impact tools and has combined T568A & T568B colour coding for easy installation.
- Design incorporates nylon loops for cable management.

Also Available in:

- 12-port, 24-port, 48-port capacity.

### MATERIAL SPECIFICATIONS



PART	DESCRIPTION	
1	Panel	SPCC 1.5mm thickness with black painted colour
2	Jack Housing	ABS UL 94V - 0
3	Jack Contact	
3-1		Phosphor Bronze 50-60 $\mu$ " Nickel Plated
3-2		Contact Area: min 3mm 50 $\mu$ " Gold Plated
4	IDC Housing	PC +5% GF, UL 94V - 2
5	IDC Terminal	
5-1		Phosphor Bronze 50 - 60 $\mu$ " Tin Plated
5-2		110 & Krone Tool Compatible
5-3		Suitable for 22-26AWG Solid Wire
6	Jack Bracket Set	ABS, UL 94V - 0
7	Cable Holder	PA6

To view Access' extensive ranges go to: [www.accesscomms.com.au](http://www.accesscomms.com.au)

**Sydney (Head Office)**  
**Brisbane Sales**  
**Melbourne Office**  
**Adelaide Office**

Unit 1, 29 Prince William Drive, Seven Hills NSW 2147  
28 The Gateway, Broadmeadows VIC 3047  
71 Anzac Highway, Ashford SA 5035

Phone: (02) 9414 8888  
Phone: (07) 3308 5555  
Phone: (03) 9330 8333  
Phone: (08) 8338 5540

[sales@accesscomms.com.au](mailto:sales@accesscomms.com.au)  
[brisbane@accesscomms.com.au](mailto:brisbane@accesscomms.com.au)  
[melbourne@accesscomms.com.au](mailto:melbourne@accesscomms.com.au)  
[adelaide@accesscomms.com.au](mailto:adelaide@accesscomms.com.au)

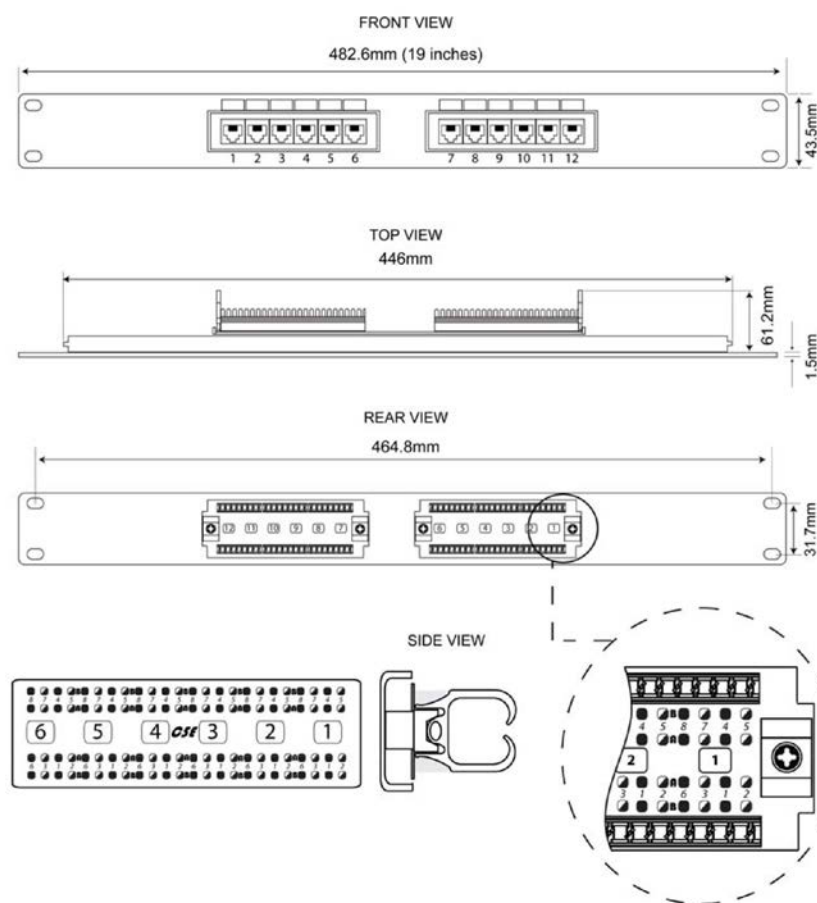
## Cat5e 12 Port Patch Panel

P4013

### PERFORMANCE SPECIFICATIONS

Insertion Force	900g	
Retention Strength	7.7 kgs between jack and plug	
Operating Temperature	- 40°C to + 80°C	
Durability	Jack	750 Plug / Jack mating cycles
	IDC	200 Max punch times
Compliance	Cat-5e performance in compliance with ANSI / TIA / EIA 568 B.2 standard	

### MEASUREMENT SPECIFICATIONS



	T568A	T568B
<b>PIN 1</b>	Green / White	Orange / White
<b>PIN 2</b>	Green	Orange
<b>PIN 3</b>	Orange / White	Green / White
<b>PIN 4</b>	Blue	Blue
<b>PIN 5</b>	Blue / White	Blue / White
<b>PIN 6</b>	Orange	Green
<b>PIN 7</b>	Brown / White	Brown / White
<b>PIN 8</b>	Brown	Brown

To view Access' extensive ranges go to: [www.accesscomms.com.au](http://www.accesscomms.com.au)

**Sydney (Head Office)**  
**Brisbane Sales**  
**Melbourne Office**  
**Adelaide Office**

Unit 1, 29 Prince William Drive, Seven Hills NSW 2147  
28 The Gateway, Broadmeadows VIC 3047  
71 Anzac Highway, Ashford SA 5035

Phone: (02) 9414 8888  
Phone: (07) 3308 5555  
Phone: (03) 9330 8333  
Phone: (08) 8338 5540

[sales@accesscomms.com.au](mailto:sales@accesscomms.com.au)  
[brisbane@accesscomms.com.au](mailto:brisbane@accesscomms.com.au)  
[melbourne@accesscomms.com.au](mailto:melbourne@accesscomms.com.au)  
[adelaide@accesscomms.com.au](mailto:adelaide@accesscomms.com.au)