

Cat5 RJ45 Coupler

P2326

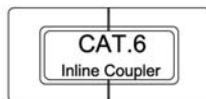
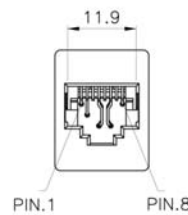
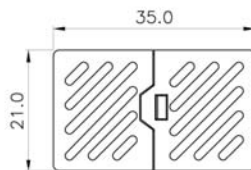
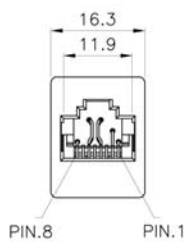
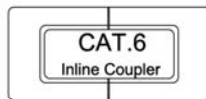
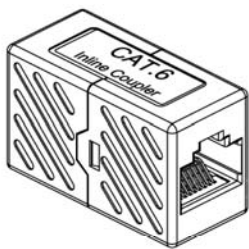


FEATURES

Cat-6 coupler can be used to link 2 patch cords together or as a gender changer.

The 1-1 wiring configuration is compatible with both T568A and T568B wiring schemes.

DESIGN & CONSTRUCTION



To view Access' extensive ranges go to: www.accesscomms.com.au

Sydney (Head Office)
Brisbane Sales
Melbourne Office
Adelaide Office

Unit 1, 29 Prince William Drive, Seven Hills NSW 2147
28 The Gateway, Broadmeadows VIC 3047
71 Anzac Highway, Ashford SA 5035

Phone: (02) 9414 8888
Phone: (07) 3308 5555
Phone: (03) 9330 8333
Phone: (08) 8338 5540

sales@accesscomms.com.au
brisbane@accesscomms.com.au
melbourne@accesscomms.com.au
adelaide@accesscomms.com.au

Cat5 RJ45 Coupler

P2326

MATERIAL CHARACTERISTICS

Plastic Housing	ABS + PC, UL 94V - 0
8P8C Socket	Housing: Polycarbonate, , UL 94V-HB, Transparent colour
	Phosphor bronze with 50-60 microinch nickel plating
	Contacts are 50 micro inch gold plated
	Minimum 3mm contact area

SPECIFICATIONS

Insertion Force	900g for 8 contacts
Retention strength	7.7kgs between jack and plug
Operating Temperature	- 40°C to + 80°C
Durability	750 cycles plug-jack mating and unmating test. Insertion cycles at 20 cycles / minute maximum. Contact resistance test per 100 cycles
Performance	The Cat6 performance is in compliance with the ANSI / TIA / EIA 568 B.2-1 standard

To view Access' extensive ranges go to: www.accesscomms.com.au

Sydney (Head Office)
Brisbane Sales
Melbourne Office
Adelaide Office

Unit 1, 29 Prince William Drive, Seven Hills NSW 2147
28 The Gateway, Broadmeadows VIC 3047
71 Anzac Highway, Ashford SA 5035

Phone: (02) 9414 8888
Phone: (07) 3308 5555
Phone: (03) 9330 8333
Phone: (08) 8338 5540

sales@accesscomms.com.au
brisbane@accesscomms.com.au
melbourne@accesscomms.com.au
adelaide@accesscomms.com.au