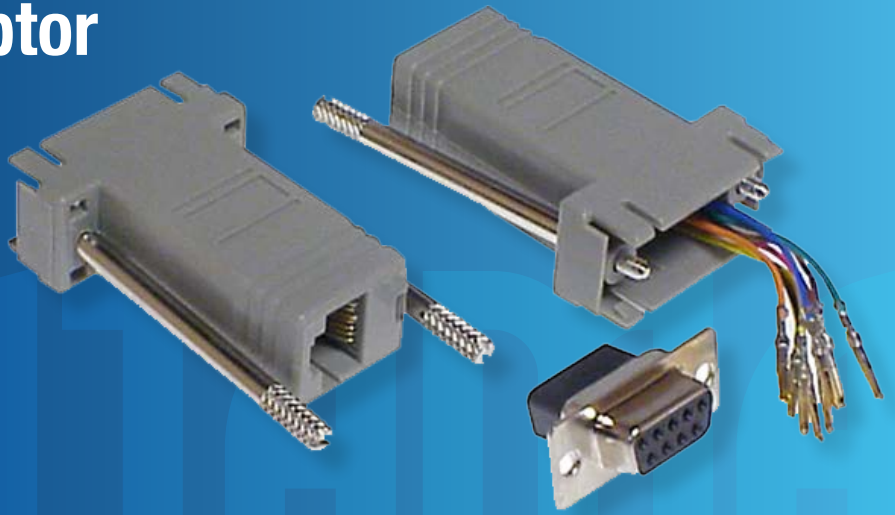


## Modular DB Adaptor

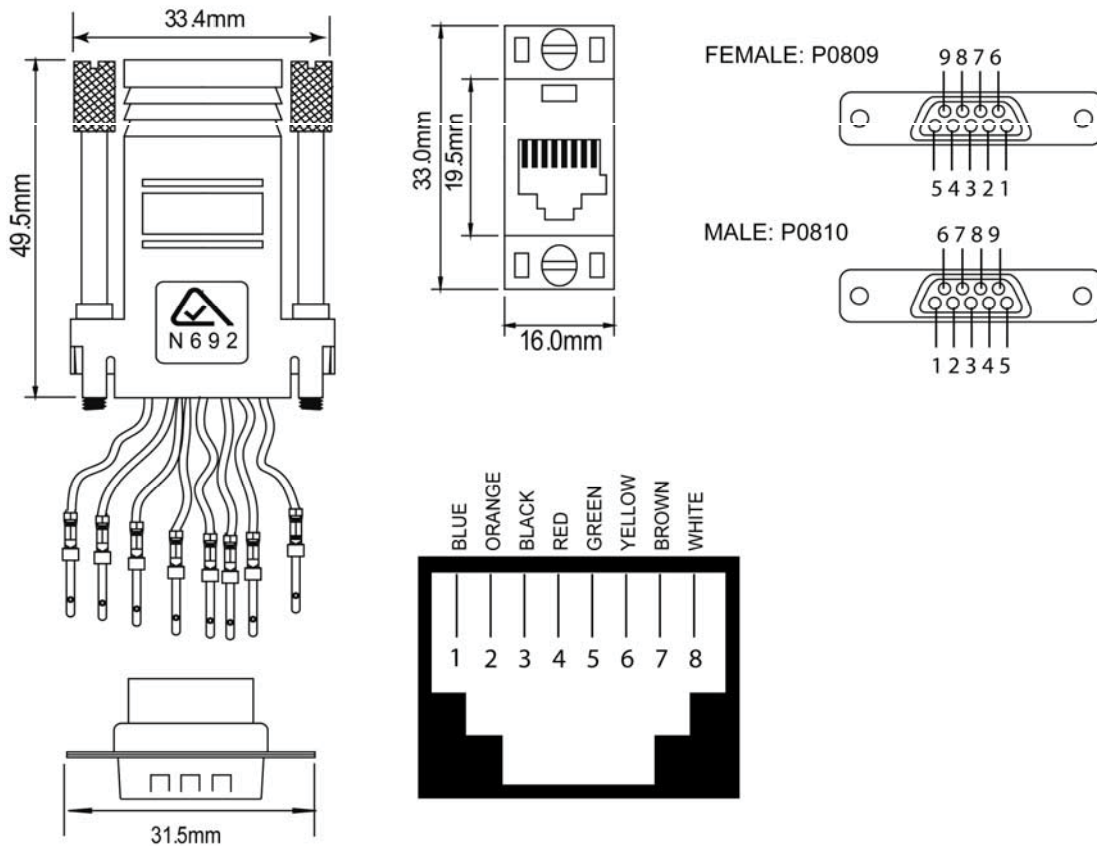
P0809, P0810



### FEATURES

- Adapts male or female DB9, DB15 or DB25 computer plugs to 8 position RJ45 or 6 position RJ11 modular socket.
- Back shell is pre-wired to modular socket ready to insert pins into desired positions of the DB connector.

### DESIGN & CONSTRUCTION



To view Access' extensive ranges go to: [www.accesscomms.com.au](http://www.accesscomms.com.au)

Sydney (Head Office)  
Brisbane Sales  
Melbourne Office  
Adelaide Office

Unit 1, 29 Prince William Drive, Seven Hills NSW 2147  
28 The Gateway, Broadmeadows VIC 3047  
71 Anzac Highway, Ashford SA 5035

Phone: (02) 9414 8888  
Phone: (07) 3308 5555  
Phone: (03) 9330 8333  
Phone: (08) 8338 5540

sales@accesscomms.com.au  
brisbane@accesscomms.com.au  
melbourne@accesscomms.com.au  
adelaide@accesscomms.com.au

## Modular DB Adaptor

P0809, P0810

### PHYSICAL CHARACTERISTICS

DB Casing	DE-09 (DB9)
Modular Socket	8P8C

### WIRING CONFIGURATION

Pin No	P0809	P0810
1	Blue	Blue
2	Orange	Orange
3	Black	Black
4	Red	Red
5	Green	Green
6	Yellow	Yellow
7	Brown	Brown
8	White	White

To view Access' extensive ranges go to: [www.accesscomms.com.au](http://www.accesscomms.com.au)

**Sydney (Head Office)**  
**Brisbane Sales**  
**Melbourne Office**  
**Adelaide Office**

Unit 1, 29 Prince William Drive, Seven Hills NSW 2147

28 The Gateway, Broadmeadows VIC 3047  
71 Anzac Highway, Ashford SA 5035

Phone: (02) 9414 8888  
Phone: (07) 3308 5555  
Phone: (03) 9330 8333  
Phone: (08) 8338 5540

[sales@accesscomms.com.au](mailto:sales@accesscomms.com.au)  
[brisbane@accesscomms.com.au](mailto:brisbane@accesscomms.com.au)  
[melbourne@accesscomms.com.au](mailto:melbourne@accesscomms.com.au)  
[adelaide@accesscomms.com.au](mailto:adelaide@accesscomms.com.au)