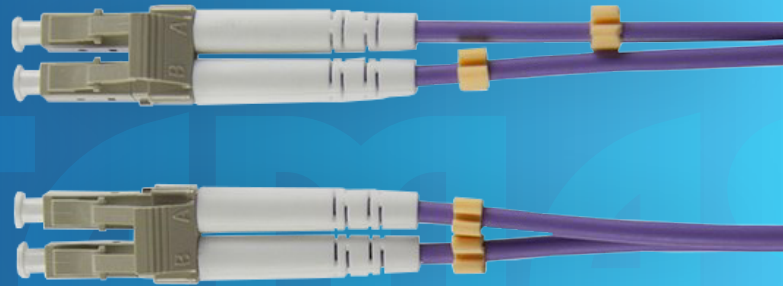


## Fibre Cable LC to LC OM4 Fibre Optic Patch Cable PURPLE;

F2422-010, F2422-020, F2422-030,  
F2422-050, F2422-100

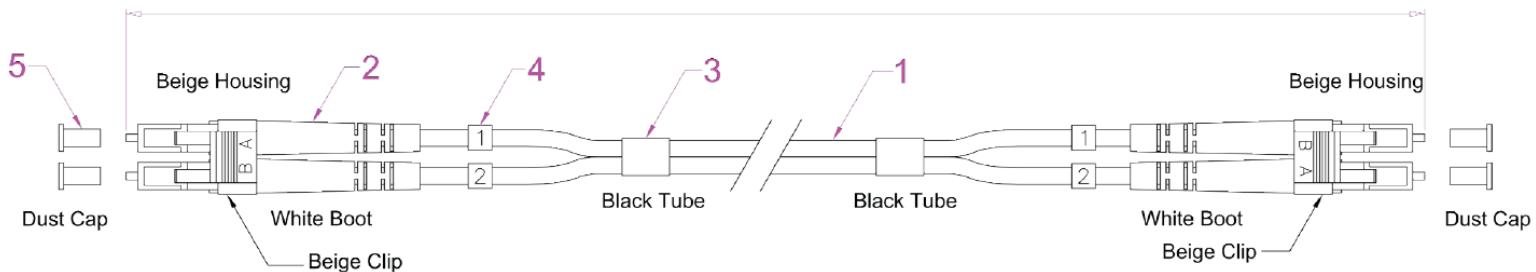


### FEATURES

Used for general fibre applications which include fibre switches, patch panels and servers. Duplex fibre consists of two fibres in a figure-8 configuration which is required for applications that require simultaneous, bi-directional data.

- Fibre optic patch cable
- Duplex multimode, fitted with duplex LC to LC connectors
- 50/125µm (50µm fibre with 125µm cladding) OM4 fibre
- 3.0mm LSZH purple jacket

### CONSTRUCTION DRAWING



1	OD: 3.0mm, Multimode, 50/125 OM4, Duplex Fiber Optic Cable, LSZH, Color: Purple
2	LC/PC MM Duplex Connector (Beige Housing White Boot)
3	Shrinkage Tube
4	Channel Marker
5	Dust Cap

### MATERIALS

Connectors	4 : LC
Polishing	P : PC
Cable Fibres	2 : Duplex
Diameter	3: 3.0mm
Mode Type	4: 50/125 OM4

### LENGTHS

1 METRE
2 METRE
3 METRE
5 METRE
10 METRE

To view Access' extensive ranges go to: [www.accesscomms.com.au](http://www.accesscomms.com.au)

**Sydney (Head Office)**  
**Brisbane Office**  
**Melbourne Office**  
**Adelaide Office**

33-35 Alleyne Street, Chatswood, NSW, 2067  
28 The Gateway, Broadmeadows, VIC, 3047  
71 Anzac Highway, Ashford, SA, 5035

Phone: (02) 9414 8888  
Phone: (07) 3308 5555  
Phone: (03) 9330 8333  
Phone: (08) 8338 5540

Fax: (02) 9414 8800  
Fax: (07) 3308 5500  
Fax: (03) 9330 8330  
Mob: 0438 245 116

[websales@accesscomms.com.au](mailto:websales@accesscomms.com.au)  
[brisbane@accesscomms.com.au](mailto:brisbane@accesscomms.com.au)  
[melbourne@accesscomms.com.au](mailto:melbourne@accesscomms.com.au)  
[adelaide@accesscomms.com.au](mailto:adelaide@accesscomms.com.au)