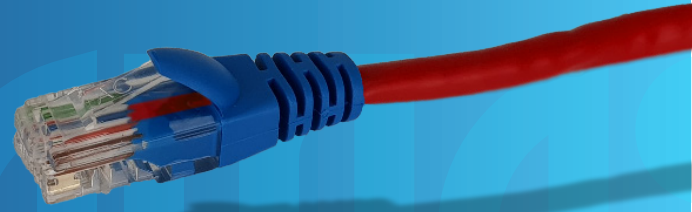


Cat5e Crossover Patch Cable

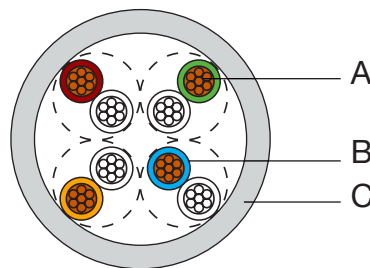
W2681RED, W2690RED, W2691RED, W2692RED,
W2696RED, W2682RED, W2685RED, W2683RED



FEATURES

- Made from 100% Oxygen-Free Copper
- Unshielded Twisted Pair (UTP)
- 4 Twisted Pairs (Multi-Stranded) crossover colour code
- Red with Blue Boots
- RJ45-RJ45 with 50µm gold connectors & high quality injection moulded plus for outstanding strain relief
- Snagless Boots
- Supplied in Datamaster hang-cell bags
- 5-Year Limited Warranty

DESIGN & CONSTRUCTION



ITEM	DESCRIPTION	COLOUR	SPECIFICATION	MATERIALS
A	Conductor		0.203(±0.010)mm	Stranded Bare Copper
B	Insulation	Orange/White with Orange, Blue/White with Blue, Green/White with Green, Brown/White with Brown	1.01(±0.13)mm	Solid PE
C	Sheath	Red	5.50(±0.30)mm	PVC

To view Access' extensive ranges go to: www.accesscomms.com.au

Sydney (Head Office)
Brisbane Office
Melbourne Office
Adelaide Office

33-35 Alleyne Street, Chatswood, NSW, 2067
28 The Gateway, Broadmeadows, VIC, 3047
71 Anzac Highway, Ashford, SA, 5035

Phone: (02) 9414 8888
Phone: (07) 3308 5555
Phone: (03) 9330 8333
Phone: (08) 8338 5540

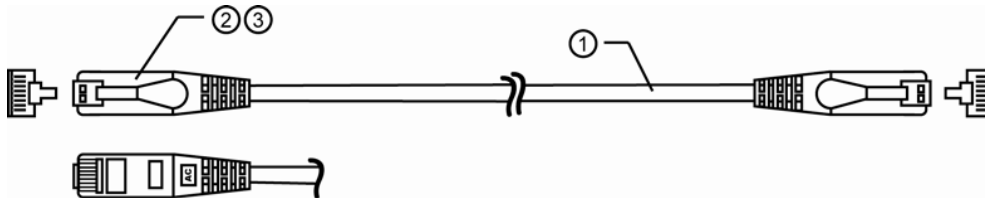
Fax: (02) 9414 8800
Fax: (07) 3308 5500
Fax: (03) 9330 8330
Mob: 0438 245 116

websales@accesscomms.com.au
brisbane@accesscomms.com.au
melbourne@accesscomms.com.au
adelaide@accesscomms.com.au

Cat5e Crossover Patch Cable

W2681RED, W2690RED, W2691RED, W2692RED,
W2696RED, W2682RED, W2685RED, W2683RED

DESIGN & CONSTRUCTION



ITEM	DESCRIPTION	SPECIFICATION
1	Cable	UTP Cat-5e; Stranded conductors; 24AWG
2	Jacket	50P PVC
3	Connectors	8P8C; 50µ" Gold plated, Molded boot

PINOUT

J1	J2	COLOUR
1	3	Green/White
2	6	Green
3	1	Orange/White
4	4	Blue
5	5	Blue/White
6	2	Orange
7	7	Brown/White
8	8	Brown

LENGTHS

CODE	LENGTH
W2681RED	1 Metre
W2682RED	2 Metre
W2683RED	3 Metre
W2685RED	5 Metre
W2690RED	10 Metre
W2691RED	15 Metre
W2692RED	20 Metre
W2696RED	30 Metre

ELECTRICAL PROPERTIES

Max. Conductor DC Resistance at 20°C (Ω/100M)	< 9.14
Min. Insulation DC Resistance at 20°C (MΩ*M)	> 200
Rated Temperature (°C)	80
Rated Voltage	30

REGULATORY COMPLIANCE



To view Access' extensive ranges go to: www.accesscomms.com.au

Sydney (Head Office)
Brisbane Office
Melbourne Office
Adelaide Office

33-35 Alleyne Street, Chatswood, NSW, 2067
28 The Gateway, Broadmeadows, VIC, 3047
71 Anzac Highway, Ashford, SA, 5035

Phone: (02) 9414 8888
Phone: (07) 3308 5555
Phone: (03) 9330 8333
Phone: (08) 8338 5540

Fax: (02) 9414 8800
Fax: (07) 3308 5500
Fax: (03) 9330 8330
Mob: 0438 245 116

websales@accesscomms.com.au
brisbane@accesscomms.com.au
melbourne@accesscomms.com.au
adelaide@accesscomms.com.au