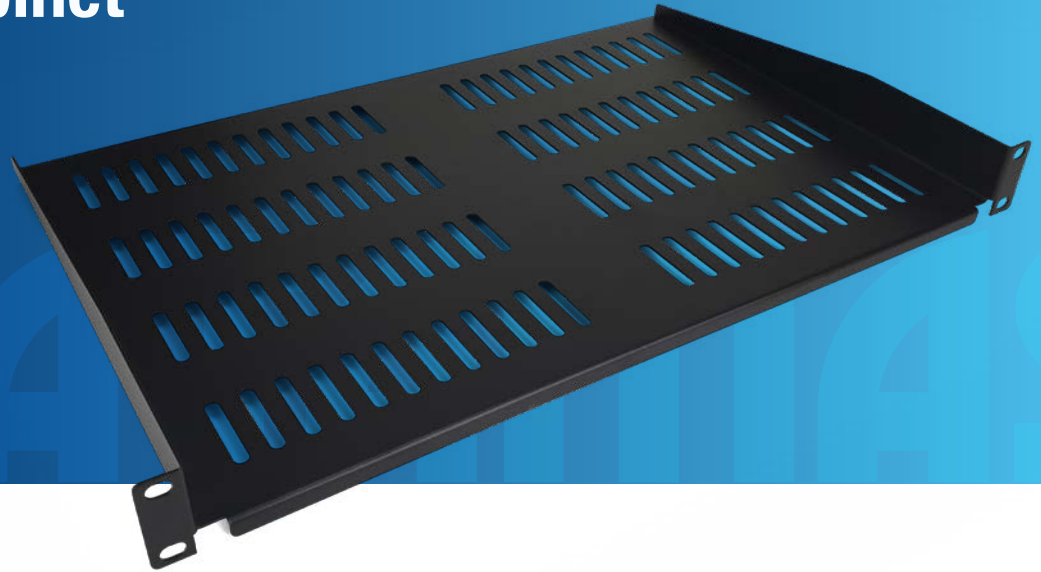


## Cantilever Cabinet Shelf

C1026

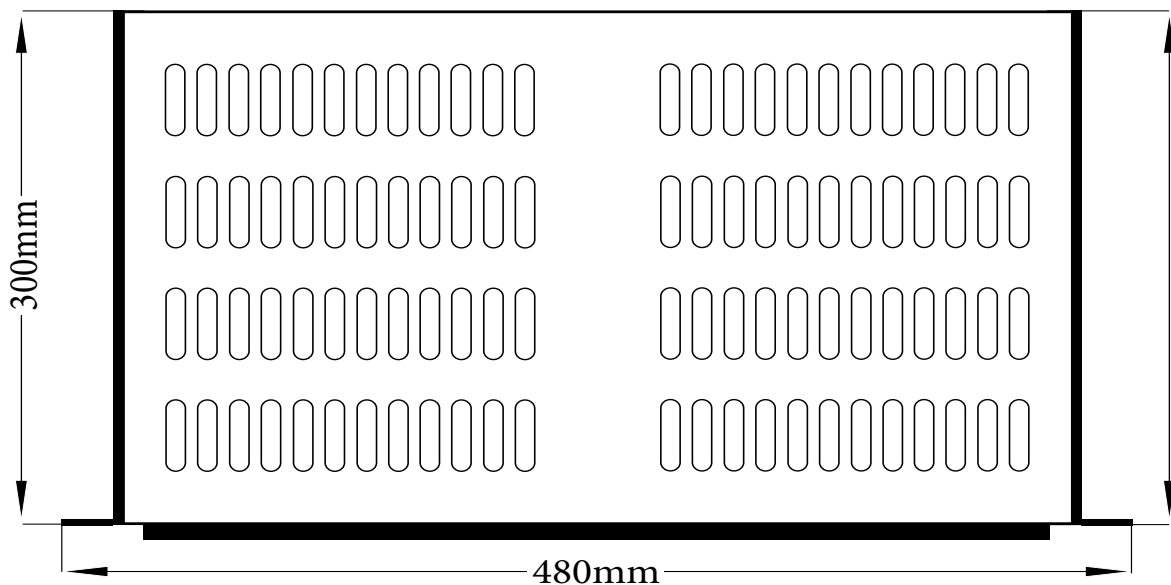


### FEATURES

Vented cantilever shelf to suit our Datamaster® Server/Network cabinets and all 19 inch rack cabinets. Black powder coated finish. Provides easy installation for extra shelf requirement. Use C1023 Cage Nuts to secure to the rack cabinet.

CAT#	DEPTH	WIDTH	LOAD CAPACITY	SUITS CABINETS
C1026	300mm	480mm	MAX 20kg	All Series

### DESIGN & CONSTRUCTION



To view Access' extensive ranges go to: [www.accesscomms.com.au](http://www.accesscomms.com.au)

Sydney (Head Office)  
Brisbane Sales  
Melbourne Office  
Adelaide Office

Unit 1, 29 Prince William Drive, Seven Hills NSW 2147  
28 The Gateway, Broadmeadows VIC 3047  
71 Anzac Highway, Ashford SA 5035

Phone: (02) 9414 8888  
Phone: (07) 3308 5555  
Phone: (03) 9330 8333  
Phone: (08) 8338 5540

[sales@accesscomms.com.au](mailto:sales@accesscomms.com.au)  
[brisbane@accesscomms.com.au](mailto:brisbane@accesscomms.com.au)  
[melbourne@accesscomms.com.au](mailto:melbourne@accesscomms.com.au)  
[adelaide@accesscomms.com.au](mailto:adelaide@accesscomms.com.au)