



Fibre backbone interface.

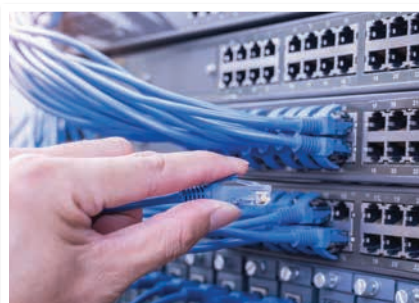
VSETH-SWF Series: Gigabit Fibre Ethernet Access Switch in 9 ports.

The VSETH-SWF Series enables the creation of high speed networks by connecting fibre and Ethernet infrastructure. Connect IP devices including surveillance, telephones, access points and more to fibre backbone with 4 x 1000M SFP and 5 x 1000M Ethernet ports. They are ideal in connecting large facilities such as school & university campuses.

- 5 x Gigabit 1000Mbps Ethernet ports
- 4 x Gigabit 1000Mbps SFP fibre ports
- Unmanaged switch for plug and play applications
- DIN rail mountable for neat rackmount installations
- Professional appearance full metal enclosure
- Lightning overvoltage protection up to 4kV
- Electrostatic discharge protection up to 8kVW
- Operates in extreme temperatures from -30°~65°C



Fast 1000Mbps Ethernet & SFP Ports



Plug & Play Unmanaged Switch



Overvoltage & ESD Protection

VSETH-SWF Series | Specifications

| Model | VSETH-SW9GF |
|------------------------|--|
| Product Image |  |
| Device Ports | 4 x 1000 Base-X 5 x 10/100/1000 Base-T |
| Network Management | Unmanaged |
| Switching Capacity | 33Gbps |
| Packet Forwarding Rate | 13.39Mbps |
| Packet Buffer Memory | 1.75MB |
| MAC Table Size | 4K |
| Exchange Mode | Store & forward |
| Power Supply | 9 ~ 57VDC |
| Lightning Protection | Common Mode: 4kV / Differential Mode: 2kV |
| ESD Protection | Contact Discharge: ±6kV / Air Discharge: ±8kV |
| Operating Environment | -30° ~ 65°C / RH90% (max) |
| Mounting Options | DIN Rail |
| Weight | 0.62kg |
| Dimensions | 150mm x 100mm x 42mm |

Your local VIP Vision™ network solutions professional:



To view Access' extensive ranges go to:
www.accesscomms.com.au

Sydney: (02) 9414 8888
 Brisbane: Mob: 0438 245 116
 Melbourne: (03) 9330 8333
 Adelaide: (08) 8338 5540

- sales@accesscomms.com.au
 - brisbane@accesscomms.com.au
 - melbourne@accesscomms.com.au
 - adelaide@accesscomms.com.au