

DATAMASTER® CABLES

Datamaster® Cat5E UTP Patch Cords

- Made from 100% oxygen-free copper
- 4 twisted pairs (multi-stranded) T568A colour code
- RJ45-RJ45 connectors with snagless boots
- Injection-moulded connectors ensure the highest quality and outstanding strain relief
- Supplied in Datamaster® poly hangsell bags
- Custom-made cables - lengths, colours and printing - are also available



BLUE

CAT #	LENGTH
W2641BLU	300mm
W2650BLU	500mm
W2651BLU	1.0 Metre
W2648BLU	1.5 Metre
W2652BLU	2.0 Metre
W2644BLU	2.5 Metre
W2653BLU	3.0 Metre
W2654BLU	4.0 Metre
W2655BLU	5.0 Metre
W2656BLU	6.0 Metre
W2658BLU	8.0 Metre
W2660BLU	10.0 Metre
W2670BLU	20.0 Metre
W2675BLU	30.0 Metre

Datamaster® Cat6 UTP Patch Cords

- Cat6 cable is standard for Gigabit Ethernet and other network protocols that are backward compatible with Cat5/5e and Cat3 standards
- Made from 100% Oxygen-Free Copper
- 4 twisted pairs (multi-stranded) T568A colour code
- RJ45-RJ45 connectors with Snagless Boots
- Injection-moulded connectors ensure the highest quality and outstanding strain relief
- Supplied in Datamaster® Poly Hangsell bags
- Custom-made cables - lengths, colours and printing - are also available



ASH

CAT #	LENGTH
W2741ASH	300mm
W2750ASH	500mm
W2751ASH	1.0 Metre
W2748ASH	1.5 Metre
W2752ASH	2.0 Metre
W2753ASH	3.0 Metre
W2755ASH	5.0 Metre
W2756ASH	6.0 Metre
W2758ASH	8.0 Metre
W2760ASH	10.0 Metre
W2770ASH	20.0 Metre



BLACK

CAT #	LENGTH
W2741BLK	300mm
W2750BLK	500mm
W2751BLK	1.0 Metre
W2748BLK	1.5 Metre
W2752BLK	2.0 Metre
W2753BLK	3.0 Metre
W2755BLK	5.0 Metre
W2756BLK	6.0 Metre
W2758BLK	8.0 Metre
W2760BLK	10.0 Metre
W2770BLK	20.0 Metre
W2775BLK	30.0 Metre



BLUE

CAT #	LENGTH
W2750BLU	500mm
W2751BLU	1.0 Metre
W2748BLU	1.5 Metre
W2752BLU	2.0 Metre
W2753BLU	3.0 Metre
W2755BLU	5.0 Metre
W2756BLU	6.0 Metre
W2760BLU	10.0 Metre
W2770BLU	20.0 Metre
W2775BLU	30.0 Metre



GREEN

CAT #	LENGTH
W2741GRN	300mm
W2750GRN	500mm
W2751GRN	1.0 Metre
W2748GRN	1.5 Metre
W2752GRN	2.0 Metre
W2753GRN	3.0 Metre
W2755GRN	5.0 Metre
W2756GRN	6.0 Metre
W2758GRN	8.0 Metre
W2760GRN	10.0 Metre
W2770GRN	20.0 Metre
W2775GRN	30.0 Metre



ORANGE

CAT #	LENGTH
W2741ORA	300mm
W2750ORA	500mm
W2751ORA	1.0 Metre
W2748ORA	1.5 Metre
W2752ORA	2.0 Metre
W2753ORA	3.0 Metre
W2755ORA	5.0 Metre
W2756ORA	6.0 Metre
W2758ORA	8.0 Metre
W2760ORA	10.0 Metre
W2770ORA	20.0 Metre
W2775ORA	30.0 Metre

CAT6 PATCH CABLE



PINK

CAT #	LENGTH
W2741PNK	300mm
W2750PNK	500mm
W2751PNK	1.0 Metre
W2748PNK	1.5 Metre
W2752PNK	2.0 Metre
W2753PNK	3.0 Metre
W2755PNK	5.0 Metre
W2756PNK	6.0 Metre
W2758PNK	8.0 Metre
W2760PNK	10.0 Metre
W2770PNK	20.0 Metre



PURPLE

CAT #	LENGTH
W2741PUR	300mm
W2750PUR	500mm
W2751PUR	1.0 Metre
W2748PUR	1.5 Metre
W2752PUR	2.0 Metre
W2753PUR	3.0 Metre
W2755PUR	5.0 Metre
W2756PUR	6.0 Metre
W2758PUR	8.0 Metre
W2760PUR	10.0 Metre
W2770PUR	20.0 Metre



RED

CAT #	LENGTH
W2741RED	300mm
W2750RED	500mm
W2751RED	1.0 Metre
W2748RED	1.5 Metre
W2752RED	2.0 Metre
W2753RED	3.0 Metre
W2755RED	5.0 Metre
W2756RED	6.0 Metre
W2758RED	8.0 Metre
W2760RED	10.0 Metre
W2770RED	20.0 Metre



WHITE

CAT #	LENGTH
W2741WHI	300mm
W2750WHI	500mm
W2751WHI	1.0 Metre
W2748WHI	1.5 Metre
W2752WHI	2.0 Metre
W2753WHI	3.0 Metre
W2755WHI	5.0 Metre
W2756WHI	6.0 Metre
W2758WHI	8.0 Metre
W2760WHI	10.0 Metre
W2770WHI	20.0 Metre



YELLOW

CAT #	LENGTH
W2750YEL	500mm
W2751YEL	1.0 Metre
W2748YEL	1.5 Metre
W2752YEL	2.0 Metre
W2753YEL	3.0 Metre
W2755YEL	5.0 Metre
W2756YEL	6.0 Metre
W2758YEL	8.0 Metre
W2760YEL	10.0 Metre
W2770YEL	20.0 Metre

Datamaster® Cat6a S/FTP LSZH Patch Cords

- S/FTP Cat6a patch cables are standard for Gigabit and 10-Gigabit network connections
- Made from 100% oxygen-free copper
- 4 twisted pairs (multi-stranded) T568B colour code
- Shielded modular plugs
- RJ45-RJ45 connectors with snagless latch protectors
- Injection-moulded ensure the highest quality and outstanding strain relief
- Supplied in Datamaster® poly hangsell bags
- Custom-made cables - lengths, colours and printing - are also available



ASH

CAT #	LENGTH
W2841ASH	300mm
W2850ASH	500mm
W2851ASH	1.0 Metre
W2848ASH	1.5 Metre
W2852ASH	2.0 Metre
W2853ASH	3.0 Metre
W2855ASH	5.0 Metre
W2856ASH	6.0 Metre
W2860ASH	10.0 Metre
W2870ASH	20.0 Metre



BLACK

CAT #	LENGTH
W2841BLK	300mm
W2850BLK	500mm
W2851BLK	1.0 Metre
W2848BLK	1.5 Metre
W2852BLK	2.0 Metre
W2853BLK	3.0 Metre
W2855BLK	5.0 Metre
W2856BLK	6.0 Metre
W2860BLK	10.0 Metre
W2870BLK	20.0 Metre



BLUE

CAT #	LENGTH
W2841BLU	300mm
W2850BLU	500mm
W2851BLU	1.0 Metre
W2848BLU	1.5 Metre
W2852BLU	2.0 Metre
W2844BLU	2.5 Metre
W2853BLU	3.0 Metre
W2855BLU	5.0 Metre
W2860BLU	10.0 Metre
W2870BLU	20.0 Metre



GREEN

CAT #	LENGTH
W2841GRN	300mm
W2850GRN	500mm
W2851GRN	1.0 Metre
W2848GRN	1.5 Metre
W2852GRN	2.0 Metre
W2844GRN	2.5 Metre
W2853GRN	3.0 Metre
W2855GRN	5.0 Metre
W2860GRN	10.0 Metre
W2870GRN	20.0 Metre
W2875GRN	30.0 Metre



ORANGE

CAT #	LENGTH
W2841ORA	300mm
W2850ORA	500mm
W2851ORA	1.0 Metre
W2848ORA	1.5 Metre
W2852ORA	2.0 Metre
W2844ORA	2.5 Metre
W2853ORA	3.0 Metre
W2855ORA	5.0 Metre
W2860ORA	10.0 Metre
W2870ORA	20.0 Metre
W2875ORA	30.0 Metre

CAT6A PATCH CABLE



PINK

CAT #	LENGTH
W2841PNK	300mm
W2850PNK	500mm
W2851PNK	1.0 Metre
W2848PNK	1.5 Metre
W2852PNK	2.0 Metre
W2853PNK	3.0 Metre
W2855PNK	5.0 Metre
W2860PNK	10.0 Metre
W2870PNK	20.0 Metre



PURPLE

CAT #	LENGTH
W2841PUR	300mm
W2850PUR	500mm
W2851PUR	1.0 Metre
W2848PUR	1.5 Metre
W2852PUR	2.0 Metre
W2853PUR	3.0 Metre
W2855PUR	5.0 Metre
W2860PUR	10.0 Metre
W2870PUR	20.0 Metre



RED

CAT #	LENGTH
W2841RED	300mm
W2850RED	500mm
W2851RED	1.0 Metre
W2848RED	1.5 Metre
W2852RED	2.0 Metre
W2853RED	3.0 Metre
W2855RED	5.0 Metre
W2860RED	10.0 Metre
W2870RED	20.0 Metre



WHITE

CAT #	LENGTH
W2841WHI	300mm
W2850WHI	500mm
W2851WHI	1.0 Metre
W2848WHI	1.5 Metre
W2852WHI	2.0 Metre
W2853WHI	3.0 Metre
W2855WHI	5.0 Metre
W2860WHI	10.0 Metre
W2870WHI	20.0 Metre



YELLOW

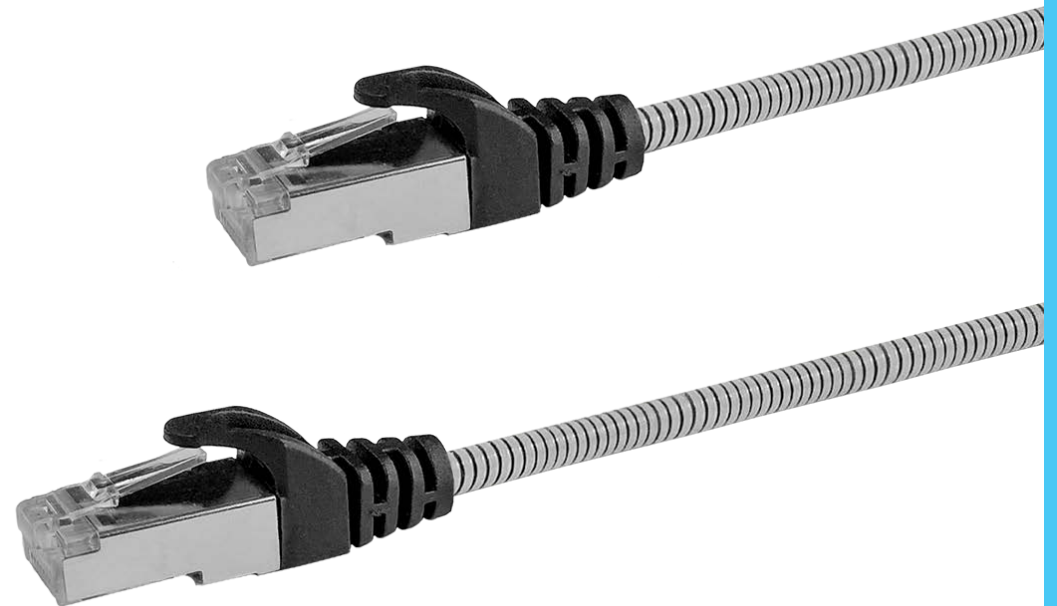
CAT #	LENGTH
W2841YEL	300mm
W2850YEL	500mm
W2851YEL	1.0 Metre
W2848YEL	1.5 Metre
W2852YEL	2.0 Metre
W2853YEL	3.0 Metre
W2855YEL	5.0 Metre
W2860YEL	10.0 Metre
W2870YEL	20.0 Metre

CAT6A U/FTP ARMoured SLIM PATCH CABLE

Datamaster® Cat6a ArmourCord® Slim U/FTP Patch Cable

- Designed for highly susceptible environments
- Suitable for Manufacturing Facilities, Educational Facilities, Agricultural Sites, Hospitality, Roads and Infrastructure, Transport and Logistics, heavy access areas
- Withstands tough conditions: weather impact, traffic, pests, force, movement
- Armoured design feature increases cable longevity
- Material: SUS 304 (18/8) commercial grade stainless steel
- Protects against compression, external interference, corrosion
- Provides superior tensile resistance against damage
- U/FTP 32AWG with Slim 4.7mm OD for space-saving and flexibility
- Fluke DSX-8000 Channel Tested
- Length: 0.25m - 2m
- Colour: Natural stainless steel colour

CAT #	LENGTH
W2850SLIARM	500mm
W2851SLIARM	1.0 Metre
W2848SLIARM	1.5 Metre
W2652SLIARM	2.0 Metre



Datamaster® Cat6 Slim UTP Patch Cords

- Slim; 40% smaller diameter than standard patch cable
- Flexible; able to bend at a tight radius
- LSZH jacket
- Made from 100% oxygen-free copper
- 4 twisted pairs (multi-stranded) T568A colour code
- 28AWG
- RJ45-RJ45 connectors
- Custom-made cables - lengths, colours and printing - are also available



BLACK

CAT #	LENGTH
W2640SLIBLK	250mm
W2650SLIBLK	500mm
W2648SLIBLK	1.0 Metre
W2651SLIBLK	1.5 Metre
W2652SLIBLK	2.0 Metre
W2653SLIBLK	3.0 Metre
W2655SLIBLK	5.0 Metre



BLUE

CAT #	LENGTH
W2640SLIBLU	250mm
W2650SLIBLU	500mm
W2648SLIBLU	1.0 Metre
W2651SLIBLU	1.5 Metre
W2652SLIBLU	2.0 Metre
W2653SLIBLU	3.0 Metre
W2655SLIBLU	5.0 Metre
W2660SLIBLU	10.0 Metre



GREEN

CAT #	LENGTH
W2640SLIGRN	250mm
W2650SLIGRN	500mm
W2648SLIGRN	1.0 Metre
W2651SLIGRN	1.5 Metre
W2652SLIGRN	2.0 Metre
W2653SLIGRN	3.0 Metre
W2655SLIGRN	5.0 Metre



PINK

CAT #	LENGTH
W2640SLIPNK	250mm
W2650SLIPNK	500mm
W2648SLIPNK	1.0 Metre
W2651SLIPNK	1.5 Metre
W2652SLIPNK	2.0 Metre
W2653SLIPNK	3.0 Metre
W2655SLIPNK	5.0 Metre

CAT6 SLIM PATCH CABLE



RED

CAT #	LENGTH
W2640SLIRED	250mm
W2650SLIRED	500mm
W2648SLIRED	1.0 Metre
W2651SLIRED	1.5 Metre
W2652SLIRED	2.0 Metre
W2653SLIRED	3.0 Metre
W2655SLIRED	5.0 Metre



WHITE

CAT #	LENGTH
W2640SLIWHI	250mm
W2650SLIWHI	500mm
W2648SLIWHI	1.0 Metre
W2651SLIWHI	1.5 Metre
W2652SLIWHI	2.0 Metre
W2653SLIWHI	3.0 Metre
W2655SLIWHI	5.0 Metre



YELLOW

CAT #	LENGTH
W2640SLIYEL	250mm
W2650SLIYEL	500mm
W2648SLIYEL	1.0 Metre
W2651SLIYEL	1.5 Metre
W2652SLIYEL	2.0 Metre
W2653SLIYEL	3.0 Metre
W2655SLIYEL	5.0 Metre



FIBRE OPTIC PATCH CABLE

LC to LC OM4 Fibre Optic Patch Cable

- Fibre Cable LC to LC Fibre Patch Cable OM4 Duplex MultiMode are used for general fibre applications which includes fibre switches, patch panels and servers
- Duplex fibre consists of two fibres in a figure-8 configuration which is required for applications that require simultaneous, bi-directional data
- Fibre optic patch cable
- Duplex multimode, fitted with duplex LC to LC connectors
- 50/125µm (50µm fibre with 125µm cladding) OM4 fibre
- 3.0mm LSZH purple jacket

CAT #	COLOUR	TYPE	LENGTH
F2422-010	Purple	LC to LC OM4	1.0 Metre
F2422-020	Purple	LC to LC OM4	2.0 Metre
F2422-030	Purple	LC to LC OM4	3.0 Metre
F2422-050	Purple	LC to LC OM4	5.0 Metre



SELECTING QUALITY CABLE

Selecting quality cable is always the best option

With the variants available in the ethernet cable market, sometimes it's difficult to know what quality cable is and why it's the better option. Datamaster® ethernet cable is quality and we don't believe in lowering our quality to be the cheapest in the market. We do believe in being competitively priced. We've compiled a guide to what to look for when purchasing ethernet cable and why Datamaster® is the quality choice.



1. Datamaster® is made from 100% pure, oxygen-free copper

- Anything less than 100% copper is illegal, including copper clad steel
- 'Pure' and 'oxygen-free' are terms that refer to the copper not being recycled and reused
- Anything less than 100% pure, oxygen free copper will give intermittent signal and performance
- Datamaster® complies with Australian requirements for customer cabling products RCM
- Datamaster® is also RoHS compliant (EU Restriction of Hazardous Substances) and verified to exceed ISO/IEC11801 standards (International I.T. requirements)

2. Datamaster® is manufactured to exceed the data performance standards

Exceeding the standard:

- Allows for fluctuations in environmental (site) factors including installation and interference issues
- Just meeting the standards will falter post installation. If a cable just meets the standard in a controlled lab environment, it's downhill from there
- All Datamaster® Ethernet cable is FLUKE® tested, verified performance

3. Datamaster® guarantees the performance standards are exceeded and offer a limited lifetime warranty

- Datamaster® performance standards are verified, which is why we can guarantee the performance.

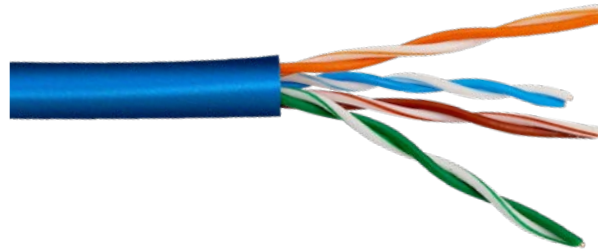
*WARRANTY

Warranty begins from purchase date of the item (invoice date). For warranty/service issues, please contact your place of purchase. Please hold on to your original receipt. The warranty covers any production and material defects of bona fide purchased product. The following is NOT COVERED by the warranty: Accidents, misuse, poor maintenance, electrical overloads such as lightning or voltage. Must be installed by a qualified installer, no DIY. No abuse. Incorrect installation of product. Tampered outer casing. Transportation costs for service call. Replacement item cannot exceed the cost of the item under warranty. The supplier is responsible for only repair or replacement.

Y8400 Range - Cat5E Solid Conductor UTP Cable

Now available in Reel In Box, quality Cat5e Solid conductor cable using 100% bare copper. 4 twisted pairs 24AWG with 7/0.02mm² solid copper conductors. Capable of supporting up to 100Mbps at 100MHz and reduces the amount of crosstalk, resulting in a greater overall transmission speed. Available in blue, with count down metre marking. Custom branding and colour also available.

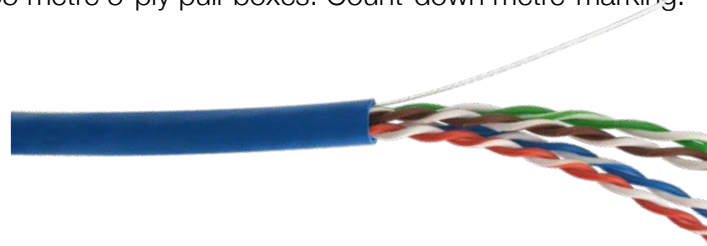
CAT #	COLOUR	LENGTH	PACKAGING
Y8400BLURIB	Blue	305 Metre	Reel-in-box



Y8100 Range - Cat5E Stranded Conductor UTP Cable

Our quality Cat-5e stranded conductor cable is suitable for assembly of patch cords. 4 twisted pairs 24AWG with 7/0.20mm² stranded conductors. Available on 100 and 305 metre reels or in durable 305 metre 5-ply pull-boxes. Count-down metre-marking.

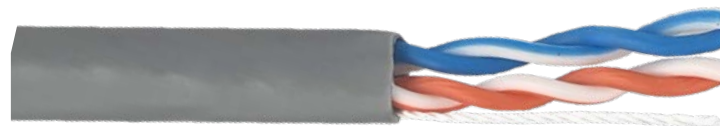
CAT #	COLOUR	LENGTH	PACKAGING
Y8100BLU	Blue	305 Metre	Pull box



Cat5E Stranded Conductor 2 Pair UTP Cable

2-pair Cat5e stranded conductor cable with 2 twisted pairs 24AWG with 7/0.20mm² stranded conductors as used for ISDN patch cords and other applications. Supplied on 305 metre reels. Count-down metre-marking.

CAT #	COLOUR	LENGTH	PACKAGING
Y8123GRY	Grey	305 Metre	Reel



Cat5E Stranded Shielded FTP Cable

Shielded FTP (Foil Twisted Pair) Cat5e cable with 7/0.20mm² stranded conductors in 4 twisted pairs. Conductors are wrapped with aluminium foil shield and mylar tape. Tinned 7/0.30mm² drain wire. Count-down metre-marking.

CAT #	COLOUR	LENGTH	PACKAGING
Y8153BLU	Blue	305 Metre	Reel
Y8153GRY	Grey	305 Metre	Reel



Cat5E Underground (Gel-Filled) UV Stabilised Solid U/UTP Cable

Cat-5e cable for outdoor and underground burial. Gel-filled jacket to prevent water ingress. 4 twisted pairs with solid copper conductors suitable for IDC terminations. Supplied on 300 metre reels. Count-down metre-marking.

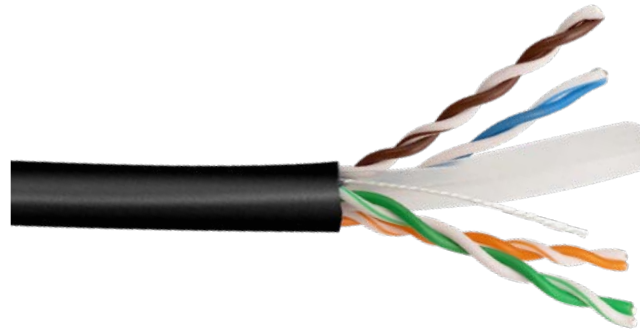
CAT #	COLOUR	LENGTH	PACKAGING
Y8485-300	Black	300 Metre	Reel



Y8500 Range - Cat6 Solid Conductor UTP Cable

Now available in Reel In Box, with LSZH PVC jacket, Datamaster® quality Cat6 Solid conductor cable uses only 100% bare copper. 4 twisted pairs 23AWG with 1/0.58mm² solid copper conductors. Capable of performing up to 550MHz, ideal for broadband video transmission and gigabit Ethernet. The significant reduction in crosstalk results in a greater overall transmission speed. Available in 10 colours, with count down metre marking. Custom branding and colour also available.

CAT #	COLOUR	LENGTH	PACKAGING
Y8500BLKRIB	Black	305 Metre	Reel-in-box
Y8500BLURIB	Blue	305 Metre	Reel-in-box
Y8500GRNRIB	Green	305 Metre	Reel-in-box
Y8500GRYRIB	Grey	305 Metre	Reel-in-box
Y8500ORARIB	Orange	305 Metre	Reel-in-box
Y8500PNKRIB	Pink	305 Metre	Reel-in-box
Y8500PURRIB	Purple	305 Metre	Reel-in-box
Y8500REDRIB	Red	305 Metre	Reel-in-box
Y8500WHIRIB	White	305 Metre	Reel-in-box
Y8500YELRIB	Yellow	305 Metre	Reel-in-box



Cat6 Stranded Conductor UTP Cable

Our quality Cat6 stranded conductor cable is suitable for assembly of patch cords. Our special P2176 modular plugs should be used when terminating this cable to ensure Cat6 performance. 4 twisted pairs 24AWG with 7/0.20mm² stranded conductors. Available in 305 metre durable 5-ply pull-boxes with count-down metre-marking.

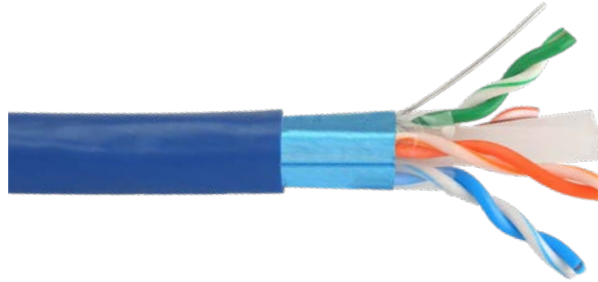
CAT #	COLOUR	LENGTH	PACKAGING
Y8600BLU	Blue	305 Metre	Pull box
Y8600GRN	Green	305 Metre	Pull box
Y8600PUR	Purple	305 Metre	Pull box
Y8600RED	Red	305 Metre	Pull box



Cat6 Solid Conductor FTP Shielded Cable

FTP (Foil Twisted Pair) Cat6 cable for premises wiring and applications where shielded cable is required. 4 twisted pairs with solid copper conductors suitable for IDC terminations to patch panels and wall jacks. Conductors are wrapped with aluminium foil shield and Mylar tape. Tinned drain wire. Available on durable 305 metre reels. Count-down metre-marking.

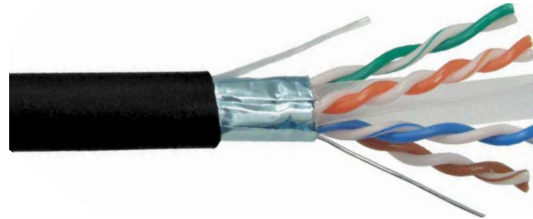
CAT #	COLOUR	LENGTH	PACKAGING
Y8553BLU	Blue	305 Metre	Reel
Y8553PNK	Pink	305 Metre	Reel
Y8553RED	Red	305 Metre	Reel



Cat6 Solid Conductor FTP Shielded UV Stabilised Outdoor Cable

UV Stabilised Cat6 Solid Shielded Cable. Suitable for outdoor use – weatherproof and able to be exposed to sunlight.

CAT #	COLOUR	LENGTH	PACKAGING
Y8510001	Black	305 Metre	Reel



Cat6 Underground (Gel-Filled) UV Stabilised Solid F/UTP Cable

Cat6 cable for outdoor and underground burial. Gel-filled jacket to prevent water ingress. 4 twisted pairs with solid copper conductors suitable for IDC terminations. Supplied on 300 metre reels. Count-down metre-marking.

CAT #	COLOUR	LENGTH	PACKAGING
Y8486-300	Black	300 Metre	Reel



Cat6a Solid Conductor S/FTP LSZH Cable

S/FTP (Shielded and Foil Twisted Pair) Cat6a LSZH (Low Smoke Zero Halogen) cable for premises wiring and applications where double shielded cable is required. Solid copper conductors suitable for IDC terminations to patch panels and wall jacks. Individual foil wrapping of the 4 twisted pairs maintains cable geometry and pair-separation. Additional overall braided shielding. Available in 305 metre wooden reels. Count-down metre-marking.

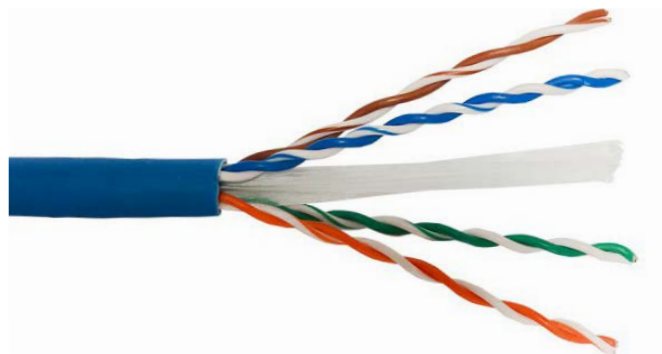
CAT #	COLOUR	LENGTH	PACKAGING
Y8700BLA	Black	305 Metre	Reel
Y8700BLU	Blue	305 Metre	Reel
Y8700GRN	Green	305 Metre	Reel
Y8700GRY	Grey	305 Metre	Reel
Y8700PNK	Pink	305 Metre	Reel
Y8700PUR	Purple	305 Metre	Reel
Y8700RED	Red	305 Metre	Reel
Y8700WHI	White	305 Metre	Reel
Y8700YEL	Yellow	305 Metre	Reel



Cat6a Solid Conductor U/UTP LSZH Cable

Cat6a UTP Lan Cable is ideal for premises wiring. All Datamaster® Ethernet Cables are Fluke® tested and are manufactured to exceed Australian standards. Datamaster's 6a Ethernet Cable allows for extremely high data rate transmission of up to 10Gbps and at a frequency of 500Mhz, supporting the fastest ethernet applications. Made from 100% Oxygen-Free Copper, Low Smoke Zero Halogen (LSZH), Tinned drain wire, Supplied on a Reel, with count-down metre-marking.

CAT #	COLOUR	LENGTH	PACKAGING
Y8750BLU	Blue	305 Metre	Reel



2 Conductor Double Insulated Speaker Cable

Quality high grade, double insulated 2-conductor speaker cable with yellow PVC jacket. Red and white conductor insulation for instant identification to avoid polarity-reversals during installation. Applications include surround sound speaker cabling and PA. Count-down metre-marking.

CAT #	JACKET	PACKING	CONDUCTORS
Y3451YEL	3.5 x 6.0mm	100 Metre reel	2 x 24 / 0.20mm ²
Y3453YEL	3.5 x 6.0mm	300 Metre reel	2 x 24 / 0.20mm ²



4 Conductor Double Insulated Speaker Cable

Quality high grade, double insulated 4-conductor speaker cable with yellow PVC jacket. Red, white, green and black conductor insulation for instant identification to avoid polarity reversals during installation. Applications include surround sound speaker cabling and PA. Count-down metre-marking.

CAT #	JACKET	PACKING	CONDUCTORS
Y3416YEL	4.9mm diameter	100 Metre reel	4 x 65 / 0.16mm ²
Y3462YEL	4.9mm diameter	200 Metre reel	4 x 65 / 0.16mm ²



Datamaster® High Grade Transparent Speaker Cable Range

Quality extra heavy duty figure-8 speaker cable with transparent PVC jacket. All cables have a white trace-line on one conductor provides easy identification to avoid polarity-reversals during installation. Supplied on 100 metre, strong polypropylene reels with count-down metre-marking.

CAT #	JACKET	PACKING	CONDUCTORS
Y3424	2 x 3.60mm ²	100 Metre reel	79 / 0.20mm ²



RG6 / U Quad-shield Coaxial Cable

RG6/U quad-shield 75 ohm coaxial cable for digital TV, CATV, SATV and CCTV/security camera applications. Low-loss for use on long runs. Aluminium braid and foil shields. Gas-injected (foamed) PE dielectric. Copper-clad steel conductor for tensile strength and reliable connection to F-Type connectors. Black jacket with count-down metre-marking. Available on 100 and 500 metre reels or 305 metre reel-in-a-box.

CAT #	COLOUR	PACKING	CORE
Y8043-003	Black	305 Metre	Copper clad steel



Two Paired Screened Data Cable

The individual shielded twisted pairs are great for many applications. The cable offers protection against electrical magnetic interference with the use of aluminium-polyester shielding. Widely used for Industrial automation, aerospace, communication, automotive. PVC outer jacket material.

CAT #	COLOUR	LENGTH	PACKING
Y8408300	Black	300 Metre reel	Solid copper

