

TEST DATA

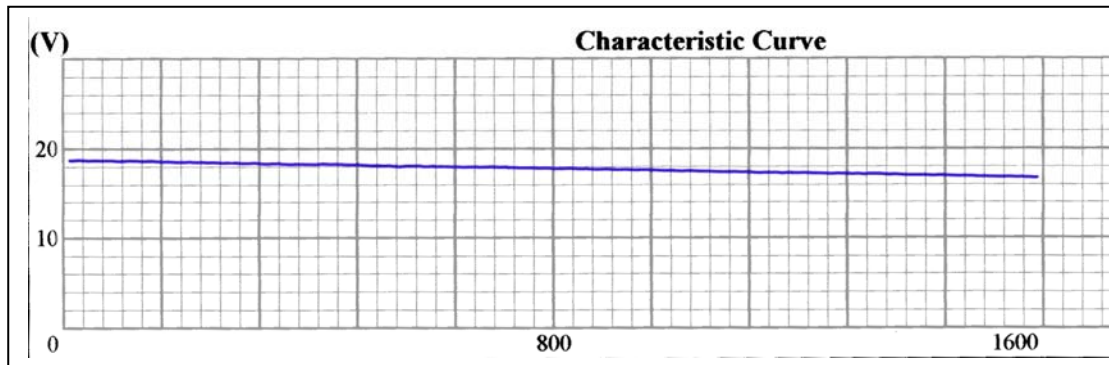
| | |
|------------------------------------|---------------|
| Primary exciting current * | 85mA maximum |
| Primary load current * | 180mA maximum |
| Secondary AC Voltage (no load) | 18.5V ± 5% |
| Secondary AC Voltage (load 1500mA) | 16.0V ± 5% |
| Hi-pot test Primary to Secondary | 4KV AC |
| Hi-pot test Primary to Secondary | 4KV AC |
| Hi-pot test Primary to Secondary | 4KV AC |
| Temperature rise *** | 75°C maximum |

* Input 230-240V AC, 50Hz.

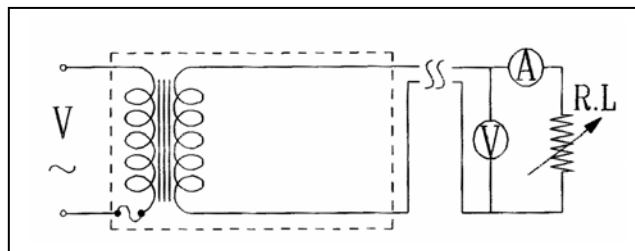
** 2mA for 1 minute.

*** Measured by resistance method (primary winding)

SECONDARY AC VOLTAGE UNDER LOAD



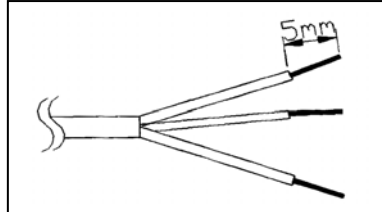
TEST CIRCUIT



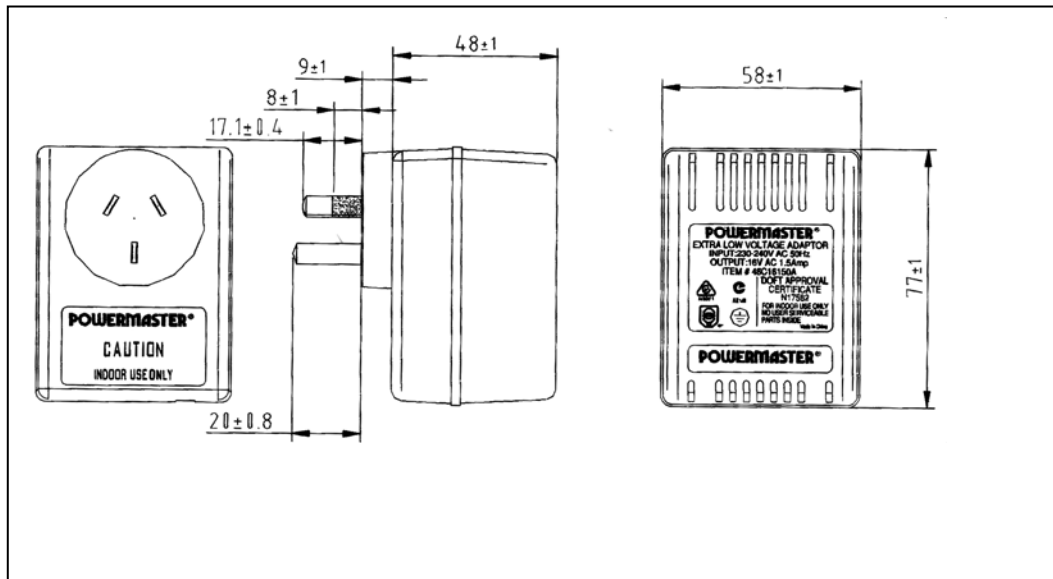
OUTPUT LEAD

Overall Length: 1774mm.

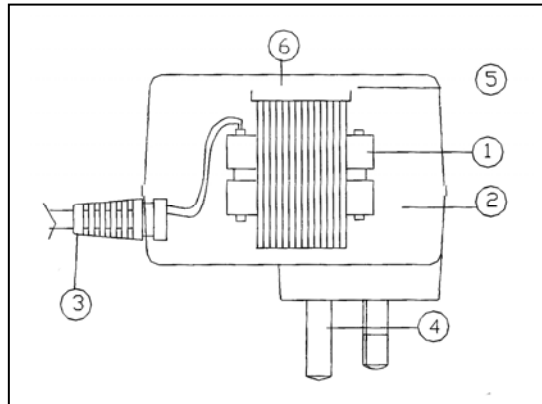
Stripped/tinned length: 5mm



PRODUCT OUTLINE DRAWING

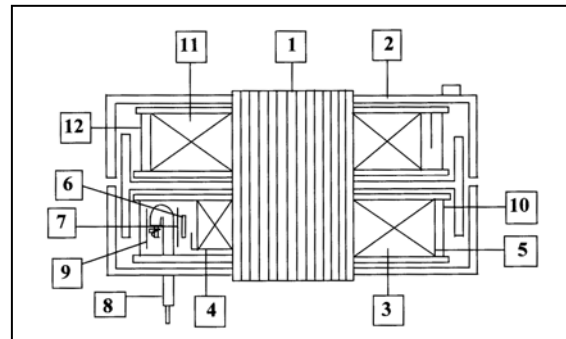


INTERNAL CONSTRUCTION



| Part Name | Specification | Quantity |
|----------------|-----------------------------|----------|
| 1. Transformer | EI-48 | 1 |
| 2. Enclosure | Noryl SE-100 | 1 |
| 3. Output Cord | AWG# 3C Round cable, 1774mm | 1 |
| 4. Blade | Ni plated brass. T:1.5mm | 3 |
| 5. Foam | 94-HF2 | 1 |
| 6. Name Plate | Polyester film | 1 |

TRANSFORMER CONSTRUCTION



| Part Name | Material | Specification |
|--------------------------|------------------------------------|--------------------|
| 1. Core | Silicon Steel | 0.5mm |
| 2. Bobbin | Nylon 101 | 0.81mm minimum |
| 3. Primary Winding | Polyurethane enamelled copper wire | 0.16mm |
| 4. Primary Crossover | Acetate tape | 0.18mm x 2 pieces |
| 5. Over Primary Winding | Mylar tape | 0.025mm |
| 6. Thermal Fuse | | 130°C, 250V, M33 |
| 7. Over Thermal Fuse | Acetate tape | 0.18mm |
| 8. Primary Lead Wire | 1617, 105°C, UL approved | AWG# 22 |
| 9. Primary Outer Wrap | Insulation paper | 0.25mm |
| 10. Primary Outer Wrap | Mylar tape | 0.25mm x 2 pieces |
| 11. Secondary Winding | Polyurethane enamelled copper wire | 0.65mm |
| 12. Secondary Outer Wrap | Mylar tape | 0.025mm x 2 pieces |