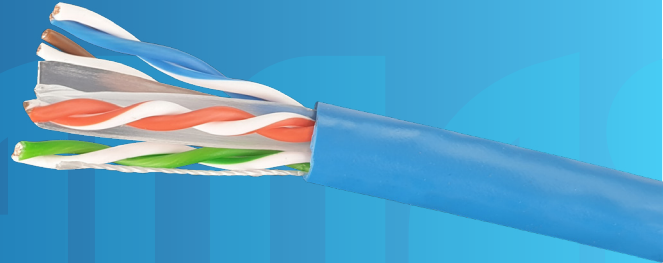


Cat6 Stranded Cable; UTP Cable

Y8600 Pull Box



FEATURES

All Datamaster Ethernet Cables are Fluke® tested and are manufactured to exceed Australian standards. Datamaster's Cat6 Ethernet Cable reduces the amount of crosstalk between the wires within the cable, resulting in a greater overall transmission speed. Cat6 Ethernet cable provides performance of up to 250MHz suitable for gigabit Ethernet. Made from 100% Oxygen-Free Copper. Supplied in Pull-Box, Count-Down metre-marking, Lifetime limited Warranty.

CAT#	COLOUR	LENGTH	PACKING
Y8600BLU	BLUE	305 Metre	Reel
Y8600RED	RED	305 Metre	Reel
Y8600PNK	PINK	305 Metre	Reel
Y8600PUR	PURPLE	305 Metre	Reel
Y8600YEL	YELLOW	305 Metre	Reel

REGULATORY COMPLIANCE



Y8600 SERIES COMMUNICATIONS CABLE – FTP CAT-6 ISO/IEC 11801 & TIA/EIA 568C.2
VERIFIED-23AWG X 4P SOLID

To view Access' extensive ranges go to: www.accesscomms.com.au

Sydney (Head Office)
Brisbane Office
Melbourne Office
Adelaide Office

33-35 Alleyne Street, Chatswood, NSW, 2067
28 The Gateway, Broadmeadows, VIC, 3047
71 Anzac Highway, Ashford, SA, 5035

Phone: (02) 9414 8888
Phone: (07) 3308 5555
Phone: (03) 9330 8333
Phone: (08) 8338 5540

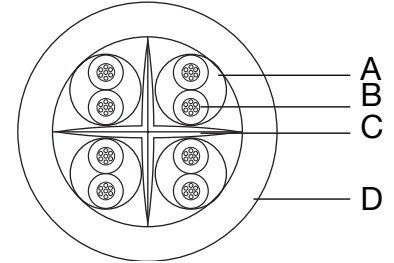
Fax: (02) 9414 8800
Fax: (07) 3308 5500
Fax: (03) 9330 8330
Mob: 0438 245 116

websales@accesscomms.com.au
brisbane@accesscomms.com.au
melbourne@accesscomms.com.au
adelaide@accesscomms.com.au

Cat6 Stranded Cable; UTP Cable

Y8600 Series Pull Box

DESIGN & CONSTRUCTION



ITEM	DESCRIPTION	COLOUR	SPECIFICATION	MATERIALS
A	Conductor	Copper	AWG 23 7/0.215 (+/- 0.015)mm	Bare Copper
B	Insulation	Blue + White-Blue Orange + White-Orange Green + White-Green Brown + White-Green	Average Thickness (0.3 mm) Minimum Point Thickness (0.2 mm) Diameter (±1.03mm +/-0.05mm) Twisted Pair Diameter (±0.01mm) 2.04	PE
C	Separator			LDPE
D	Jacket		Average Thickness (0.58 mm) Minimum Point Thickness (0.46 mm) Outer Diameter ±6.50mm +/- 0.3mm	PVC

FREQUENCY (MHZ)	RETURN LOSS (Min dB)	ATTENUATION (Max dB/100m)	NEXT (Min dB)	PS NEXT (Min dB)	IMPEDANCE (Ohm)
1	20		66.0	64.0	64kHz 125 Ω +/- 20%
4	23	4.6	65.3	63.3	
10	24.5	7.2	59.3	57.3	
16	25	9.1	56.2	54.2	
20	25	10.2	54.8	52.8	
31.25	25	12.8	51.9	49.9	1 ~ 250 MHz 100 Ω +/- 15%
62.5	24.3	18.6	47.4	45.4	
100	23.6	23.9	44.3	42.3	
155	21.5	30.4	41.4	39.4	
200	20.1	35.1	39.8	37.8	
250	18	39.6	38.3	36.3	

ELECTRICAL PROPERTIES

Resistance U balance	≤ 5
Conductor Resistance	Max 9.38 (Ω/100M) at 20°C
Temperature rating (°C)	75
Voltage rating (V)	30
NVOP	69%
1.0 ~ 2-50.0MHz Delay Skew (ns/100m)	≤ 45

To view Access' extensive ranges go to: www.accesscomms.com.au

Sydney (Head Office)
Brisbane Office
Melbourne Office
Adelaide Office

33-35 Alleyne Street, Chatswood, NSW, 2067
28 The Gateway, Broadmeadows, VIC, 3047
71 Znac Highway, Ashford, SA, 5035

Phone: (02) 9414 8888
Phone: (07) 3308 5555
Phone: (03) 9330 8333
Phone: (08) 8338 5540

Fax: (02) 9414 8800
Fax: (07) 3308 5500
Fax: (03) 9330 8330
Mob: 0438 245 116

websales@accesscomms.com.au
brisbane@accesscomms.com.au
melbourne@accesscomms.com.au
adelaide@accesscomms.com.au