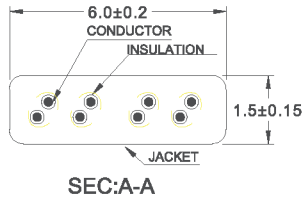
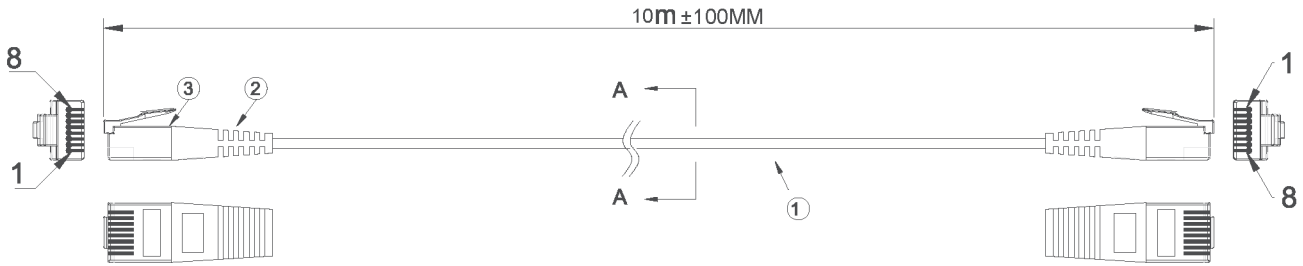


Product Code: **W2660FLTBLU**
 Flat CAT6 UTP 10M Cable

RoHS COMPLIANT



WIRE CONNECTION

COLOR (568A)	P1	PAIRS	P2
WHITE/GREEN	1	————	1
GREEN	2	————	2
WHITE/ORANGE	3	————	3
BLUE	4	————	4
WHITE/BLUE	5	————	5
ORANGE	6	————	6
WHITE/BROWN	7	————	7
BROWN	8	————	8

ELECTRICAL TEST:

- 100% OPEN&SHORT TEST
- CONTACT RESISTANCE: 2 OHM (MAX)
- INSULATION RESISTANCE: 10 MOhm (MIN) DC 300V/10mS
- Packing: each flat patch cable packed in one polybag, and 5*3cm label stick in the middle of polybag
- Cable Printing: DATAMASTER E4073 VERIFIED CAT6 PATCH CORD ANSI/TIA 568 A/B/568C.2 #32AWG 4PR

3	RJ45 PLUG:8P8C GOLD PLATED TWO-PIECE PLUG.	
2	MOLDED:BLUE LSZH MOLDED BOOT.	
	CABLE:CAT 6 UTP 32AWG(7/0.08 BC) 4PAIR OD=1.5±0.15*6.0±0.2mm	
1	BLUE LSZH JACKET.	
	MARKING:	
NO.	SPECIFICATION	QTY
	BOM LIST	

ITEM NO:	CAT 6 UTP			DRAWER DATE	LY 20160601
TITLE				CHECKED DATE	MTC 20160601
CUSTOMER				APPROVED DATE	
MATERIAL	SCALE				
REV. A	UNIT	MM			
DRAWING NO:					
ACAD FILE	E:)				

Product Code: **W2660FLTBLU**
 Flat CAT6 UTP 10M Cable

Cable ID: AC-W2660FLTBLU

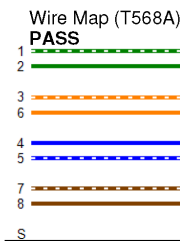
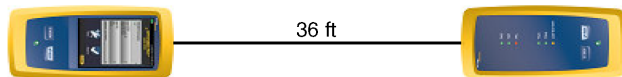
Date / Time: 07/27/2016 10:47:50 AM
 Headroom **11.6 dB (NEXT 12-45)**
 Test Limit: TIA Cat 6 Channel
 Cable Type: Cat 6 U/UTP
 Calibration Date: 03/03/2014

Software Version: V2.3 Build 2
 Limits Version: V2.3
 NVP: 69.0%

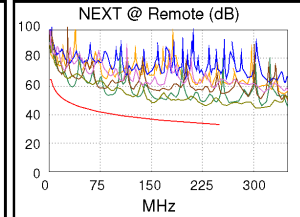
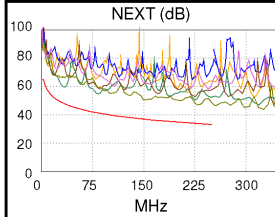
Test Summary: PASS

Model: DSX-5000
 Main S/N: 2492589
 Remote S/N: 2437146
 Main Adapter: DSX-CHA004
 Remote Adapter: DSX-CHA004

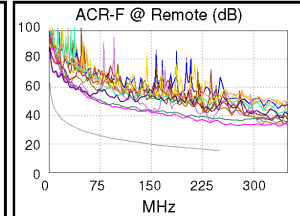
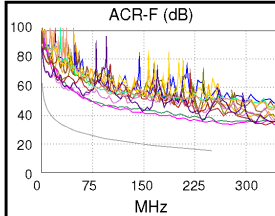
Length (ft), Limit 328	[Pair 36]	36
Prop. Delay (ns), Limit 555	[Pair 12]	54
Delay Skew (ns), Limit 50	[Pair 12]	1
Resistance (ohms)		N/A
Insertion Loss Margin (dB)	[Pair 12]	24.7
Frequency (MHz)	[Pair 12]	250.0
Limit (dB)	[Pair 12]	35.9



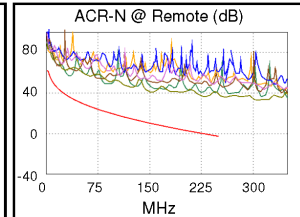
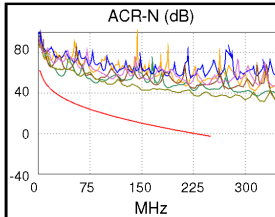
	Worst Case Margin		Worst Case Value	
PASS	MAIN	SR	MAIN	SR
Worst Pair	12-45	12-45	36-78	36-78
NEXT (dB)	11.6	11.8	13.4	13.0
Freq. (MHz)	33.3	33.3	231.5	231.5
Limit (dB)	48.0	48.0	33.7	33.7
Worst Pair	12	45	36	36
PS NEXT (dB)	14.1	13.9	15.6	15.7
Freq. (MHz)	33.3	34.0	229.0	231.5
Limit (dB)	45.3	45.1	30.8	30.7



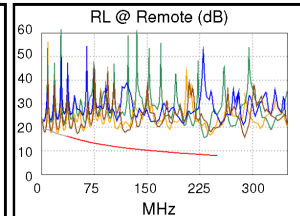
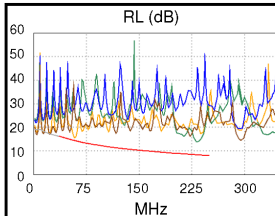
PASS	MAIN	SR	MAIN	SR
Worst Pair	45-12	45-12	45-12	45-12
ACR-F (dB)	19.7	19.3	19.8	19.3
Freq. (MHz)	239.5	236.0	240.5	236.0
Limit (dB)	15.7	15.8	15.6	15.8
Worst Pair	12	12	12	12
PS ACR-F (dB)	22.4	21.8	22.6	21.8
Freq. (MHz)	217.5	236.0	241.5	236.0
Limit (dB)	13.5	12.8	12.6	12.8



N/A	MAIN	SR	MAIN	SR
Worst Pair	12-45	12-36	36-78	36-78
ACR-N (dB)	20.3	20.0	37.5	37.1
Freq. (MHz)	32.0	3.0	231.5	231.5
Limit (dB)	36.7	61.5	-0.7	-0.7
Worst Pair	45	36	36	78
PS ACR-N (dB)	21.0	20.8	40.4	40.0
Freq. (MHz)	15.5	2.8	232.5	231.5
Limit (dB)	42.9	58.6	-3.7	-3.6



PASS	MAIN	SR	MAIN	SR
Worst Pair	12	12	36	36
RL (dB)	1.1	2.0	5.3	7.1
Freq. (MHz)	58.0	32.3	233.5	233.0
Limit (dB)	14.4	16.5	8.3	8.3



Compliant Network Standards:
 10BASE-T 100BASE-TX 100BASE-T4
 1000BASE-T ATM-25 ATM-51
 ATM-155 100VG-AnyLan TR-4
 TR-16 Active TR-16 Passive