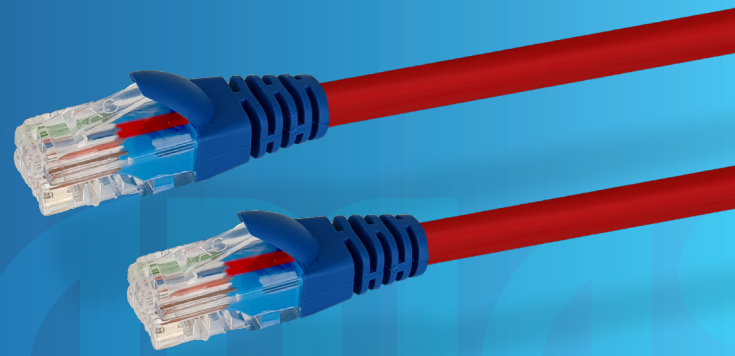
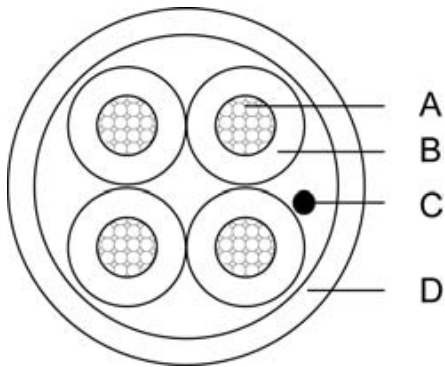


## Cat6 UTP Crossover Patch Cable

W2780RED, W2781RED, W2782RED, W2783RED,  
W2785RED, W2790RED, W2791RED, W2792RED.



### DESIGN & CONSTRUCTION



	DESCRIPTION	COLOUR	SPECIFICATION	MATERIALS
A	Conductor		4 x 65 / 0.16 (±0.008)mm (16AWG)	Stranded Bare Copper
B	Conductor Insulation (B)	Green / Red / White / Black	4 x 2.30 (± 0.15) mm	FR-PVC
C	Rip Cord			Nylon
D	Sheath	Yellow	6.40 (± 0.25)mm	FR-PVC

### ELECTRICAL CHARACTERISTICS

Maximum Conductor DC Resistance	< 1.58 Ω 1000 Metres @ 20 °C
Minimum Insulation DC Resistance	> 200M Ω / Metre @ 20 °C
Rated Temperature	80 °C
Rated Voltage	300 V

### PHYSICAL CHARACTERISTICS

Minimum Bending Radius	15 x Dmm
Conductor Elongation	> 15 % ( at breaking point )
Sheath Tensile Strength	10.00N / mm <sup>2</sup>
Sheath Elongation at Break	125.0% ( at breaking point )

### PACKING

Y3461YEL	100 Metre Reel
Y3462YEL	200 Metre Reel

To view Access' extensive ranges go to: [www.accesscomms.com.au](http://www.accesscomms.com.au)

**Sydney (Head Office)**  
**Brisbane Office**  
**Melbourne Office**  
**Adelaide Office**

33-35 Alleyne Street, Chatswood, NSW, 2067  
28 The Gateway, Broadmeadows, VIC, 3047  
71 Anzac Highway, Ashford, SA, 5035

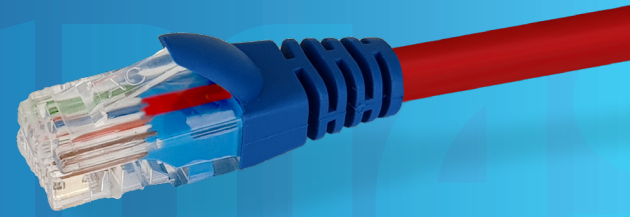
Phone: (02) 9414 8888  
Phone: (07) 3308 5555  
Phone: (03) 9330 8333  
Phone: (08) 8338 5540

Fax: (02) 9414 8800  
Fax: (07) 3308 5500  
Fax: (03) 9330 8330  
Mob: 0438 245 116

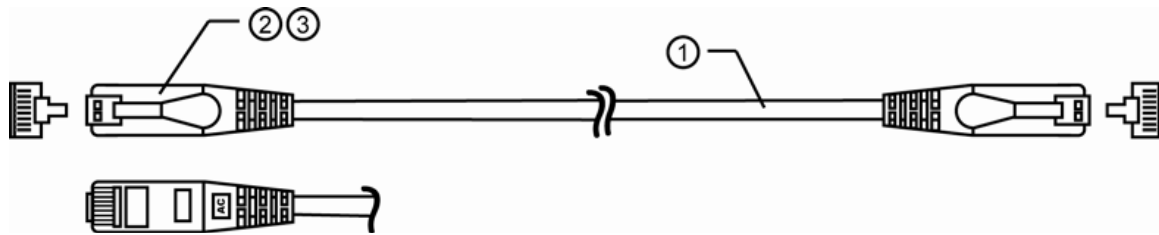
[websales@accesscomms.com.au](mailto:websales@accesscomms.com.au)  
[brisbane@accesscomms.com.au](mailto:brisbane@accesscomms.com.au)  
[melbourne@accesscomms.com.au](mailto:melbourne@accesscomms.com.au)  
[adelaide@accesscomms.com.au](mailto:adelaide@accesscomms.com.au)

## Cat6 Crossover Patch Cable

W2780RED, W2781RED, W2782RED, W2783RED,  
W2785RED, W2790RED, W2791RED, W2792RED.



### DESIGN & CONSTRUCTION



ITEM	DESCRIPTION	SPECIFICATION
1	Cable	UTP Cat-6; Stranded conductors; 24AWG
2	Jacket	50P PVC
3	Connectors	8P8C; 50µ" Gold plated, Molded boot

### PINOUT

J1	J2	COLOUR
1	3	Green/White
2	6	Green
3	1	Orange/White
4	4	Blue
5	5	Blue/White
6	2	Orange
7	7	Brown/White
8	8	Brown

### LENGTHS

CODE	LENGTH
W2780RED	0.5 Metre
W2781RED	1 Metre
W2782RED	2 Metre
W2783RED	3 Metre
W2785RED	5 Metre
W2790RED	10 Metre
W2791RED	15 Metre
W2792RED	20 Metre

### ELECTRICAL PROPERTIES

Max. Conductor DC Resistance at 20°C (Ω/100M)	< 9.14
Min. Insulation DC Resistance at 20°C (MΩ*M)	> 200
Rated Temperature (°C)	80
Rated Voltage	30

### REGULATORY COMPLIANCE



To view Access' extensive ranges go to: [www.accesscomms.com.au](http://www.accesscomms.com.au)

**Sydney (Head Office)**  
**Brisbane Office**  
**Melbourne Office**  
**Adelaide Office**

33-35 Alleyne Street, Chatswood, NSW, 2067  
28 The Gateway, Broadmeadows, VIC, 3047  
71 Anzac Highway, Ashford, SA, 5035

Phone: (02) 9414 8888  
Phone: (07) 3308 5555  
Phone: (03) 9330 8333  
Phone: (08) 8338 5540

Fax: (02) 9414 8800  
Fax: (07) 3308 5500  
Fax: (03) 9330 8330  
Mob: 0438 245 116

[websales@accesscomms.com.au](mailto:websales@accesscomms.com.au)  
[brisbane@accesscomms.com.au](mailto:brisbane@accesscomms.com.au)  
[melbourne@accesscomms.com.au](mailto:melbourne@accesscomms.com.au)  
[adelaide@accesscomms.com.au](mailto:adelaide@accesscomms.com.au)