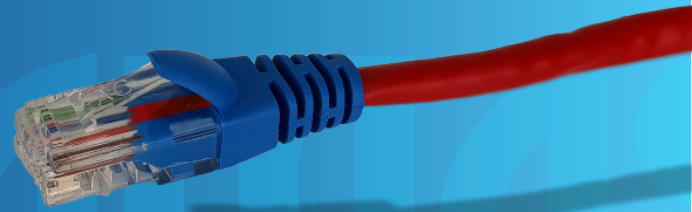


## Cat6 Crossover Patch Cable

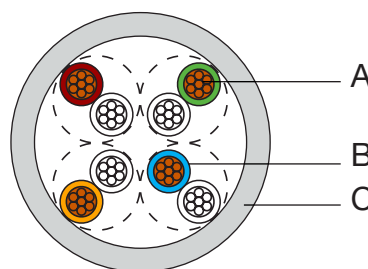
W2780RED, W2781RED, W2782RED, W2783RED,  
W2785RED, W2790RED, W2791RED, W2792RED.



### FEATURES

- Wiring is cross-over T568A to T568B
- Used for direct connection of two computer networks
- Red cord jacket with blue boots, to minimise the chance of confusion with straight-through cable
- Made from 100% Oxygen-Free Copper
- Unshielded Twisted Pair (UTP)
- 4 twisted pairs (8 multi-strand connectors)
- RJ45-RJ45 connectors; high quality injection moulded for outstanding strain relief
- 50µm gold Category 6 compliant 2-row (staggered pin) plug
- Snagless Boots
- Supplied in Datamaster Hang-cell bags
- 5-Year limited Warranty

### DESIGN & CONSTRUCTION



| ITEM | DESCRIPTION | COLOUR  | SPECIFICATION   | MATERIALS            |
|------|-------------|---|-----------------|----------------------|
| A    | Conductor   |   | 0.203(±0.010)mm | Stranded Bare Copper |
| B    | Insulation  | Orange/White with Orange,<br>Blue/White with Blue,<br>Green/White with Green,<br>Brown/White with Brown | 1.01(±0.13)mm   | Solid PE             |
| C    | Sheath      | Red   | 5.50(±0.30)mm   | PVC                  |

To view Access' extensive ranges go to: [www.accesscomms.com.au](http://www.accesscomms.com.au)

**Sydney (Head Office)**  
**Brisbane Office**  
**Melbourne Office**  
**Adelaide Office**

33-35 Alleyne Street, Chatswood, NSW, 2067  
28 The Gateway, Broadmeadows, VIC, 3047  
71 Znac Highway, Ashford, SA, 5035

Phone: (02) 9414 8888  
Phone: (07) 3308 5555  
Phone: (03) 9330 8333  
Phone: (08) 8338 5540

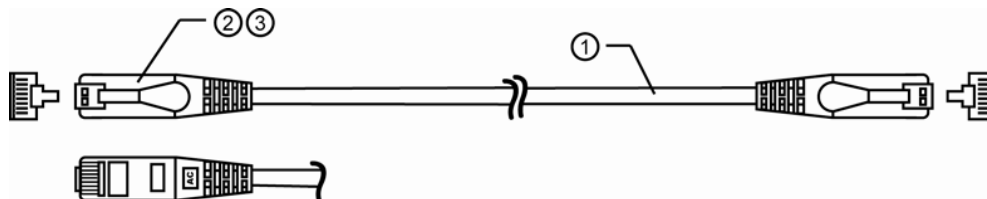
Fax: (02) 9414 8800  
Fax: (07) 3308 5500  
Fax: (03) 9330 8330  
Mob: 0438 245 116

[websales@accesscomms.com.au](mailto:websales@accesscomms.com.au)  
[brisbane@accesscomms.com.au](mailto:brisbane@accesscomms.com.au)  
[melbourne@accesscomms.com.au](mailto:melbourne@accesscomms.com.au)  
[adelaide@accesscomms.com.au](mailto:adelaide@accesscomms.com.au)

## Cat6 Crossover Patch Cable

W2780RED, W2781RED, W2782RED, W2783RED,  
W2785RED, W2790RED, W2791RED, W2792RED.

### DESIGN & CONSTRUCTION



| ITEM | DESCRIPTION | SPECIFICATION                         |
|------|-------------|---------------------------------------|
| 1    | Cable       | UTP Cat-6; Stranded conductors; 24AWG |
| 2    | Jacket      | 50P PVC                               |
| 3    | Connectors  | 8P8C; 50µ" Gold plated, Molded boot   |

### PINOUT

| J1 | J2 | COLOUR       |
|----|----|--------------|
| 1  | 3  | Green/White  |
| 2  | 6  | Green        |
| 3  | 1  | Orange/White |
| 4  | 4  | Blue         |
| 5  | 5  | Blue/White   |
| 6  | 2  | Orange       |
| 7  | 7  | Brown/White  |
| 8  | 8  | Brown        |

### LENGTHS

| CODE     | LENGTH    |
|----------|-----------|
| W2780RED | 0.5 Metre |
| W2781RED | 1 Metre   |
| W2782RED | 2 Metre   |
| W2783RED | 3 Metre   |
| W2785RED | 5 Metre   |
| W2790RED | 10 Metre  |
| W2791RED | 15 Metre  |
| W2792RED | 20 Metre  |

### ELECTRICAL PROPERTIES

|   |        |
|---|--------|
| Max. Conductor DC Resistance at 20°C (Ω/100M) | < 9.14 |
| Min. Insulation DC Resistance at 20°C (MΩ*M)  | > 200  |
| Rated Temperature (°C)                        | 80     |
| Rated Voltage                                 | 30     |

### REGULATORY COMPLIANCE



To view Access' extensive ranges go to: [www.accesscomms.com.au](http://www.accesscomms.com.au)

**Sydney (Head Office)**  
**Brisbane Office**  
**Melbourne Office**  
**Adelaide Office**

33-35 Alleyne Street, Chatswood, NSW, 2067  
28 The Gateway, Broadmeadows, VIC, 3047  
71 Anzac Highway, Ashford, SA, 5035

Phone: (02) 9414 8888  
Phone: (07) 3308 5555  
Phone: (03) 9330 8333  
Phone: (08) 8338 5540

Fax: (02) 9414 8800  
Fax: (07) 3308 5500  
Fax: (03) 9330 8330  
Mob: 0438 245 116

[websales@accesscomms.com.au](mailto:websales@accesscomms.com.au)  
[brisbane@accesscomms.com.au](mailto:brisbane@accesscomms.com.au)  
[melbourne@accesscomms.com.au](mailto:melbourne@accesscomms.com.au)  
[adelaide@accesscomms.com.au](mailto:adelaide@accesscomms.com.au)