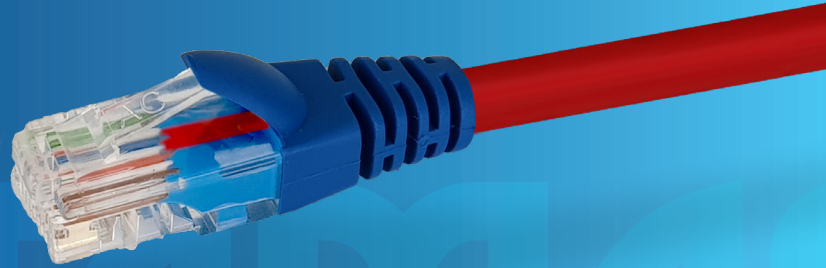


## Cat5e UTP Crossover Patch Cable

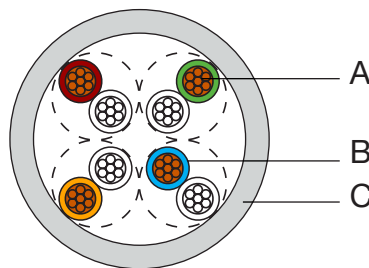
W2681RED, W2690RED, W2691RED, W2692RED,  
W2696RED, W2682RED, W2685RED, W2683RED



### FEATURES

- Made from 100% Oxygen-Free Copper
- Unshielded Twisted Pair (UTP)
- 4 Twisted Pairs (Multi-Stranded) crossover colour code
- Red with Blue Boots
- RJ45-RJ45 with 50µm gold connectors & high quality injection moulded plus for outstanding strain relief
- Snagless Boots
- Supplied in Datamaster hang-cell bags
- 5-Year Limited Warranty

### DESIGN & CONSTRUCTION



ITEM	DESCRIPTION	COLOUR	SPECIFICATION	MATERIALS
A	Conductor		0.203(±0.010)mm	Stranded Bare Copper
B	Insulation	Orange/White with Orange, Blue/White with Blue, Green/White with Green, Brown/White with Brown	1.01(±0.13)mm	Solid PE
C	Sheath	Red	5.50(±0.30)mm	PVC

To view Access' extensive ranges go to: [www.accesscomms.com.au](http://www.accesscomms.com.au)

**Sydney (Head Office)**  
**Brisbane Office**  
**Melbourne Office**  
**Adelaide Office**

Unit 1, 29 Prince William Drive, Seven Hills NSW, 2147  
28 The Gateway, Broadmeadows, VIC, 3047  
71 Anzac Highway, Ashford, SA, 5035

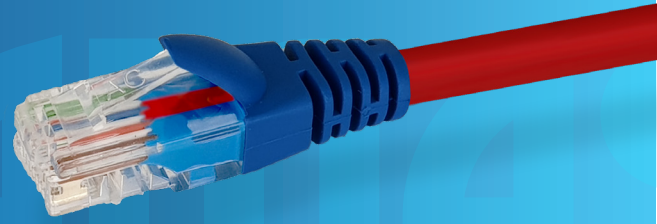
Phone: (02) 9414 8888  
Phone: (07) 3308 5555  
Phone: (03) 9330 8333  
Phone: (08) 8338 5540

Fax: (02) 9414 8800  
Fax: (07) 3308 5500  
Fax: (03) 9330 8330

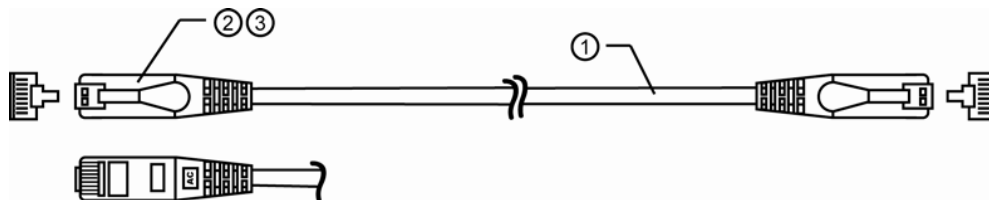
[websales@accesscomms.com.au](mailto:websales@accesscomms.com.au)  
[brisbane@accesscomms.com.au](mailto:brisbane@accesscomms.com.au)  
[melbourne@accesscomms.com.au](mailto:melbourne@accesscomms.com.au)  
[adelaide@accesscomms.com.au](mailto:adelaide@accesscomms.com.au)

## Cat5e UTP Crossover Patch Cable

W2681RED, W2690RED, W2691RED, W2692RED,  
W2696RED, W2682RED, W2685RED, W2683RED



### DESIGN & CONSTRUCTION



ITEM	DESCRIPTION	SPECIFICATION
1	Cable	UTP Cat-5e; Stranded conductors; 24AWG
2	Jacket	50P PVC
3	Connectors	8P8C; 50µ" Gold plated, Molded boot

### PINOUT

J1	J2	COLOUR
1	3	Green/White
2	6	Green
3	1	Orange/White
4	4	Blue
5	5	Blue/White
6	2	Orange
7	7	Brown/White
8	8	Brown

### LENGTHS

CODE	LENGTH
W2681RED	1 Metre
W2682RED	2 Metre
W2683RED	3 Metre
W2685RED	5 Metre
W2690RED	10 Metre
W2691RED	15 Metre
W2692RED	20 Metre
W2696RED	30 Metre

### ELECTRICAL PROPERTIES

Max. Conductor DC Resistance at 20°C (Ω/100M)	< 9.14
Min. Insulation DC Resistance at 20°C (MΩ*M)	> 200
Rated Temperature (°C)	80
Rated Voltage	30

### REGULATORY COMPLIANCE



To view Access' extensive ranges go to: [www.accesscomms.com.au](http://www.accesscomms.com.au)

Sydney (Head Office)  
Brisbane Office  
Melbourne Office  
Adelaide Office

Unit 1, 29 Prince William Drive, Seven Hills NSW, 2147  
28 The Gateway, Broadmeadows, VIC, 3047  
71 Anzac Highway, Ashford, SA, 5035

Phone: (02) 9414 8888  
Phone: (07) 3308 5555  
Phone: (03) 9330 8333  
Phone: (08) 8338 5540

Fax: (02) 9414 8800  
Fax: (07) 3308 5500  
Fax: (03) 9330 8330

websales@accesscomms.com.au  
brisbane@accesscomms.com.au  
melbourne@accesscomms.com.au  
adelaide@accesscomms.com.au