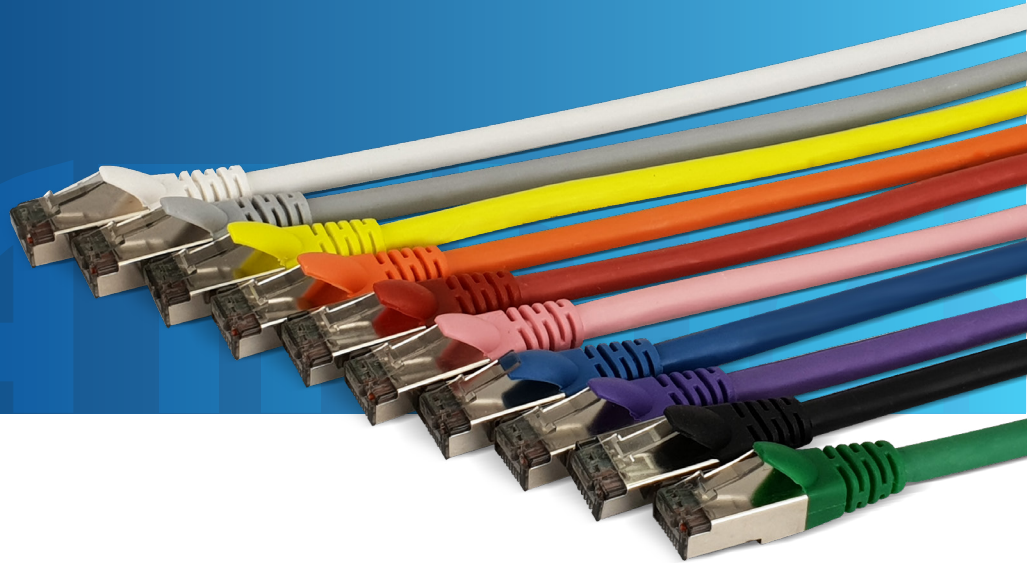


## Cat6a S/FTP LSZH Patch Cords

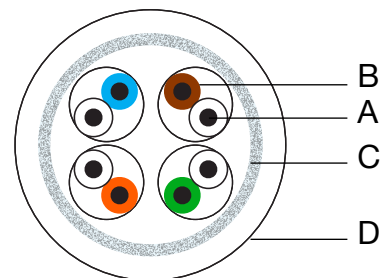
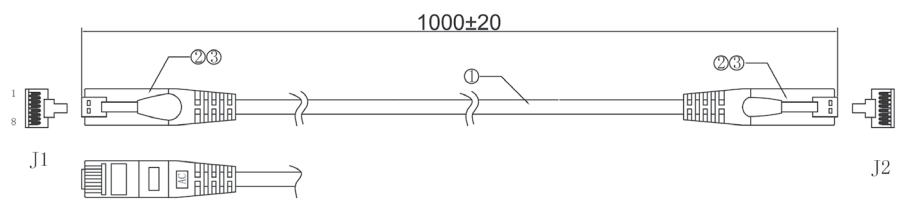
W2800 Series



### FEATURES

- S/FTP Cat6a patch cables are standard for Gigabit and 10-Gigabit network connections.
- Made from 100% Oxygen-Free Copper.
- 4 twisted pairs (multi-stranded) T568B colour code.
- Shielded modular plugs
- RJ45-RJ45 connectors with Snagless Latch Protectors.
- Injection-moulded ensure the highest quality and outstanding strain relief.
- Supplied in Datamaster® Poly Hang-cell bags.
- Custom-made cables – lengths, colours & printing – are also available.

### DESIGN & CONSTRUCTION



ITEM	DESCRIPTION	SPECIFICATION
1	Cable	ANSI/TIA-568-C.2 26AWG
2	Jacket	LSZH
3	Connectors	8P8C 50µ" Gold Plated Pins, Shielded, Smokey Grey.

ITEM	DESCRIPTION	COLOUR	SPECIFICATION	MATERIALS
A	Conductor	Copper	7/0.16 (±0.008mm)	Bare Copper
B	Insulation	Orange/White Blue/White Green/White Brown/White	1.02 (±0.05mm)	Foam PE
C	Shield	silver	Coverage ≥ 125%	Aluminum/Polyester
D	Jacket	Various	6.2 (±0.2mm)	LSZH

To view Access' extensive ranges go to: [www.accesscomms.com.au](http://www.accesscomms.com.au)

**Sydney (Head Office)** 33-35 Alleyne Street, Chatswood, NSW, 2067  
**Brisbane Office** Unit 4, 7 Luke Street, Lytton, QLD, 4178  
**Melbourne Office** 28 The Gateway, Broadmeadows, VIC, 3047  
**Adelaide Office** 71 Anzac Highway, Ashford, SA, 5035

Phone: (02) 9414 8888  
 Phone: (07) 3308 5555  
 Phone: (03) 9330 8333  
 Phone: (08) 8338 5540

Fax: (02) 9414 8800  
 Fax: (07) 3308 5500  
 Fax: (03) 9330 8330  
 Mob: 0438 245 116

[websales@accesscomms.com.au](mailto:websales@accesscomms.com.au)  
[brisbane@accesscomms.com.au](mailto:brisbane@accesscomms.com.au)  
[melbourne@accesscomms.com.au](mailto:melbourne@accesscomms.com.au)  
[adelaide@accesscomms.com.au](mailto:adelaide@accesscomms.com.au)

## Cat6a S/FTP LSZH Patch Cords

W2800 Series

FREQUENCY (MHZ)	ATTENUATION (+/-15%dB)	RETURN LOSS (9dB)	NEXT WORST PAIR (dB)	IMPEDANCE (Ohm)
1.00	2.4	20.0	74.3	
4.00	4.5	23.0	65.3	
8.00	6.4	24.5	60.8	
10.00	7.1	25.0	59.3	
16.00	9.1	25.0	56.2	
20.00	10.2	25.0	54.8	
25.00	11.4	24.2	53.3	
31.25	12.8	23.3	51.9	100±15
62.50	18.5	20.7	47.4	
100.00	23.8	19.0	44.3	
200.00	34.8	16.4	39.8	
250.00	39.4	15.6	38.3	
300.00	51.5	14.9	37.1	
400.00	60.2	13.8	35.3	
500.00	68	13	33.8	

### PINOUT

J1	J2	COLOUR
1	1	Green/White
2	2	Green
3	3	Orange/White
4	4	Blue
5	5	Blue/White
6	6	Orange
7	7	Brown/White
8	8	Brown

### TOLERANCE

NOMINAL LENGTH	TOLERANCE
250mm	± 10mm
500mm	± 15mm
1.0 Metre	± 20mm
1.5 Metre	± 20mm
2.0 Metre	± 30mm
2.5 Metre	± 30mm
3.0 Metre	± 40mm
4.0 Metre	± 40mm
5.0 Metre	± 50mm
10 Metre	± 100mm
15 Metre	± 120mm
20 Metre	± 150mm
30 Metre	± 200mm
50 Metre	± 250mm

### ELECTRICAL PROPERTIES

Insulation Resistance	Min 100 (Ω/M) at 20°C
Conductor Resistance	Max 142 (Ω/Km)at 20°C
Temperature rating (°C)	75
Voltage rating (V)	300

### REGULATORY COMPLIANCE



E4073 DATAMASTER Cat-6A S/FTP LSOH STRANDED Y8000 SERIES

To view Access' extensive ranges go to: [www.accesscomms.com.au](http://www.accesscomms.com.au)

**Sydney (Head Office)**

**Brisbane Office**

**Melbourne Office**

**Adelaide Office**

33-35 Alleyne Street, Chatswood, NSW, 2067

Unit 4, 7 Luke Street, Lytton, QLD, 4178

28 The Gateway, Broadmeadows, VIC, 3047

71 Anzac Highway, Ashford, SA, 5035

Phone: (02) 9414 8888

Phone: (07) 3308 5555

Phone: (03) 9330 8333

Phone: (08) 8338 5540

Fax: (02) 9414 8800

Fax: (07) 3308 5500

Fax: (03) 9330 8330

Mob: 0438 245 116

[websales@accesscomms.com.au](mailto:websales@accesscomms.com.au)

[brisbane@accesscomms.com.au](mailto:brisbane@accesscomms.com.au)

[melbourne@accesscomms.com.au](mailto:melbourne@accesscomms.com.au)

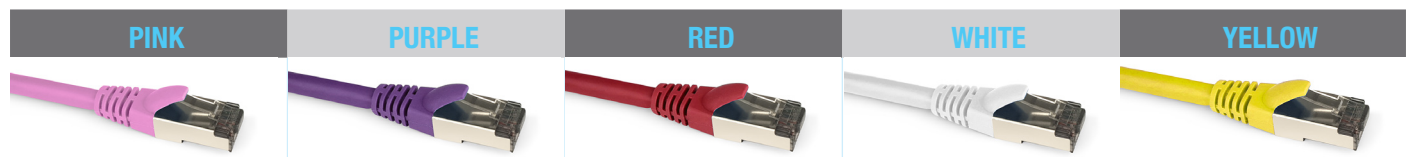
[adelaide@accesscomms.com.au](mailto:adelaide@accesscomms.com.au)

## Cat6a S/FTP LSZH Patch Cords

### W2800 Series



CAT#	LENGTH	CAT#	LENGTH	CAT#	LENGTH	CAT#	LENGTH	CAT#	LENGTH
W2841ASH	300mm	W2841BLK	300mm	W2841BLU	300mm	W2841GRN	300mm	W2841ORA	300mm
W2850ASH	500mm	W2850BLK	500mm	W2850BLU	500mm	W2850GRN	500mm	W2850ORA	500mm
W2851ASH	1.0 Metre	W2851BLK	1.0 Metre	W2851BLU	1.0 Metre	W2851GRN	1.0 Metre	W2851ORA	1.0 Metre
W2848ASH	1.5 Metre	W2848BLK	1.5 Metre	W2848BLU	1.5 Metre	W2848GRN	1.5 Metre	W2848ORA	1.5 Metre
W2852ASH	2.0 Metre	W2852BLK	2.0 Metre	W2852BLU	2.0 Metre	W2852GRN	2.0 Metre	W2852ORA	2.0 Metre
W2844ASH	2.5 Metre	W2844BLK	2.5 Metre	W2844BLU	2.5 Metre	W2844GRN	2.5 Metre	W2844ORA	2.5 Metre
W2853ASH	3.0 Metre	W2853BLK	3.0 Metre	W2853BLU	3.0 Metre	W2853GRN	3.0 Metre	W2853ORA	3.0 Metre
W2854ASH	4.0 Metre	W2854BLK	4.0 Metre	W2854BLU	4.0 Metre	W2854GRN	4.0 Metre	W2854ORA	4.0 Metre
W2855ASH	5.0 Metre	W2855BLK	5.0 Metre	W2855BLU	5.0 Metre	W2855GRN	5.0 Metre	W2855ORA	5.0 Metre
W2856ASH	6.0 Metre	W2856BLK	6.0 Metre	W2856BLU	6.0 Metre	W2856GRN	6.0 Metre	W2856ORA	6.0 Metre
W2858ASH	8.0 Metre	W2858BLK	8.0 Metre	W2858BLU	8.0 Metre	W2858GRN	8.0 Metre	W2858ORA	8.0 Metre
W2860ASH	10 Metre	W2860BLK	10 Metre	W2860BLU	10 Metre	W2860GRN	10 Metre	W2860ORA	10 Metre
W2865ASH	15 Metre	W2865BLK	15 Metre	W2865BLU	15 Metre	W2865GRN	15 Metre	W2865ORA	15 Metre
W2870ASH	20 Metre	W2870BLK	20 Metre	W2870BLU	20 Metre	W2870GRN	20 Metre	W2870ORA	20 Metre
W2875ASH	30 Metre	W2875BLK	30 Metre	W2875BLU	30 Metre	W2875GRN	30 Metre	W2875ORA	30 Metre



CAT#	LENGTH	CAT#	LENGTH	CAT#	LENGTH	CAT#	LENGTH	CAT#	LENGTH
W2841PNK	300mm	W2841PUR	300mm	W2841RED	300mm	W2841WHI	300mm	W2841YEL	300mm
W2850PNK	500mm	W2850PUR	500mm	W2850RED	500mm	W2850WHI	500mm	W2850YEL	500mm
W2851PNK	1.0 Metre	W2851PUR	1.0 Metre	W2851RED	1.0 Metre	W2851WHI	1.0 Metre	W2851YEL	1.0 Metre
W2848PNK	1.5 Metre	W2848PUR	1.5 Metre	W2848RED	1.5 Metre	W2848WHI	1.5 Metre	W2848YEL	1.5 Metre
W2852PNK	2.0 Metre	W2852PUR	2.0 Metre	W2852RED	2.0 Metre	W2852WHI	2.0 Metre	W2852YEL	2.0 Metre
W2844PNK	2.5 Metre	W2844PUR	2.5 Metre	W2844RED	2.5 Metre	W2844WHI	2.5 Metre	W2844YEL	2.5 Metre
W2853PNK	3.0 Metre	W2853PUR	3.0 Metre	W2853RED	3.0 Metre	W2853WHI	3.0 Metre	W2853YEL	3.0 Metre
W2854PNK	4.0 Metre	W2854PUR	4.0 Metre	W2854RED	4.0 Metre	W2854WHI	4.0 Metre	W2854YEL	4.0 Metre
W2855PNK	5.0 Metre	W2855PUR	5.0 Metre	W2855RED	5.0 Metre	W2855WHI	5.0 Metre	W2855YEL	5.0 Metre
W2856PNK	6.0 Metre	W2856PUR	6.0 Metre	W2856RED	6.0 Metre	W2856WHI	6.0 Metre	W2856YEL	6.0 Metre
W2858PNK	8.0 Metre	W2858PUR	8.0 Metre	W2858RED	8.0 Metre	W2858WHI	8.0 Metre	W2858YEL	8.0 Metre
W2860PNK	10 Metre	W2860PUR	10 Metre	W2860RED	10 Metre	W2860WHI	10 Metre	W2860YEL	10 Metre
W2865PNK	15 Metre	W2865PUR	15 Metre	W2865RED	15 Metre	W2865WHI	15 Metre	W2865YEL	15 Metre
W2870PNK	20 Metre	W2870PUR	20 Metre	W2870RED	20 Metre	W2870WHI	20 Metre	W2870YEL	20 Metre
W2875PNK	30 Metre	W2875PUR	30 Metre	W2875RED	30 Metre	W2875WHI	30 Metre	W2875YEL	30 Metre

To view Access' extensive ranges go to: [www.accesscomms.com.au](http://www.accesscomms.com.au)

**Sydney (Head Office)**  
**Brisbane Office**  
**Melbourne Office**  
**Adelaide Office**

33-35 Alleyne Street, Chatswood, NSW, 2067  
 Unit 4, 7 Luke Street, Lytton, QLD, 4178  
 28 The Gateway, Broadmeadows, VIC, 3047  
 71 Anzac Highway, Ashford, SA, 5035

Phone: (02) 9414 8888  
 Phone: (07) 3308 5555  
 Phone: (03) 9330 8333  
 Phone: (08) 8338 5540

Fax: (02) 9414 8800  
 Fax: (07) 3308 5500  
 Fax: (03) 9330 8330  
 Mob: 0438 245 116

[websales@accesscomms.com.au](mailto:websales@accesscomms.com.au)  
[brisbane@accesscomms.com.au](mailto:brisbane@accesscomms.com.au)  
[melbourne@accesscomms.com.au](mailto:melbourne@accesscomms.com.au)  
[adelaide@accesscomms.com.au](mailto:adelaide@accesscomms.com.au)